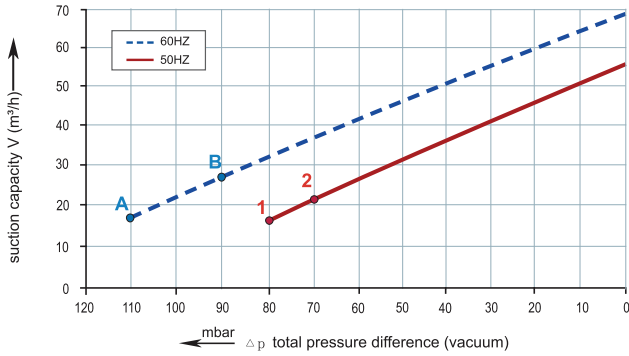




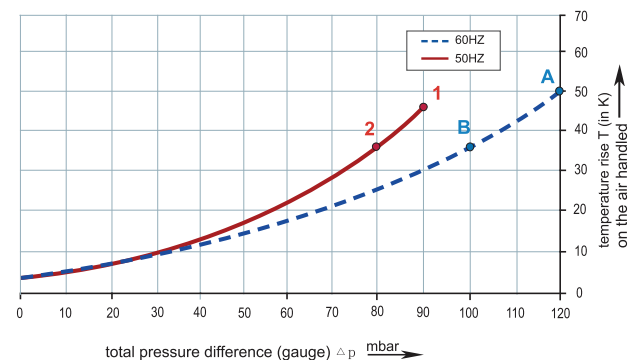
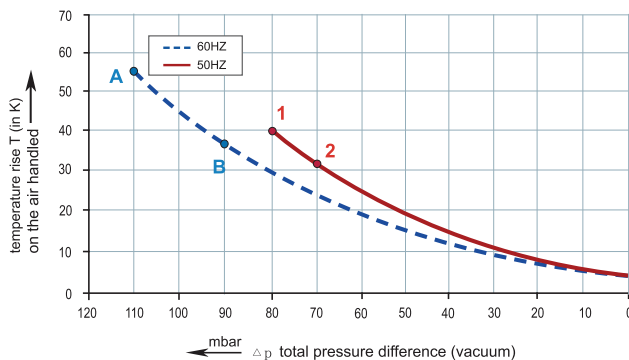
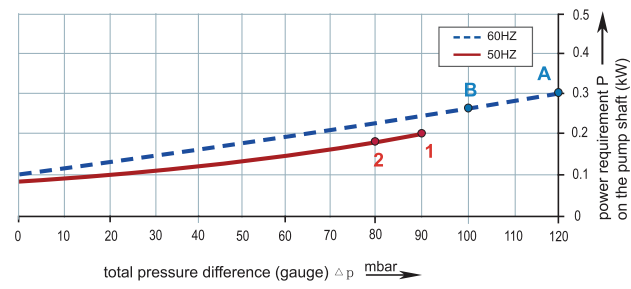
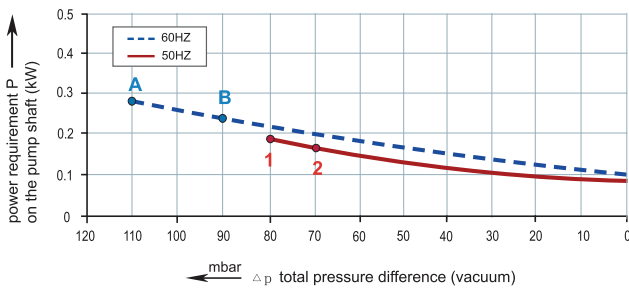
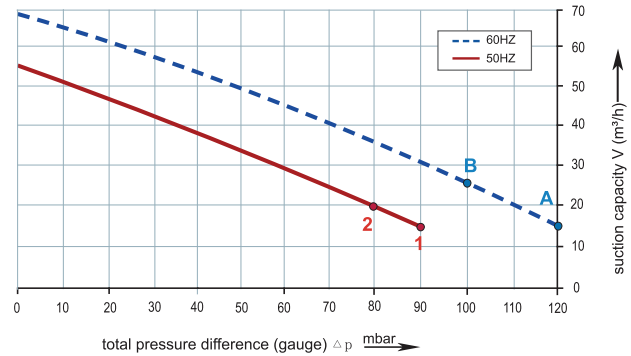
1RSC 20-32

Performance curve for Vacuum pump



1RSC 20-32

Performance curve for Compressor



The performance curves are based on air at a temperature of 15 °C and an atmospheric pressure of 1013 mbar with a tolerance of +/- 10 %. The total pressure differences are valid for suction and ambient temperatures up to 25 °C. For other conditions please confer with us.

Each RSC type can be applied both as vacuum pump and compressor in continuous operation over the total stated performance curve range. The motors are available as standard for the input voltage range of 50 and 60 Hz and for protection category IP 55 as well as approved for UL and CSA.



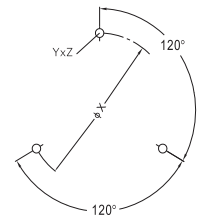
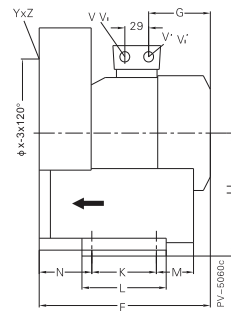
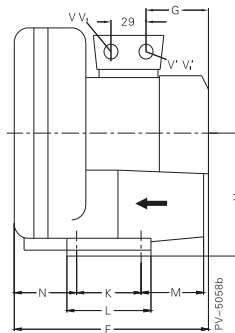
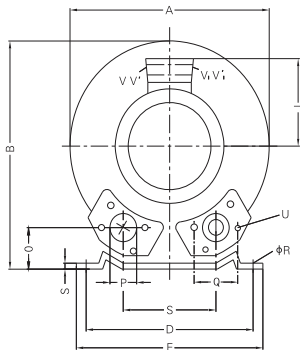
Madan Technologies
Maagan Michael
D. N. Menashe
3780500 Israel

Tel: +972-4-6243353
Fax: +972-4-6243366
sales@madantec.com
www.madantec.com

RENOVA

1RSC 20-32

Curve No.	Model	Freq. (Hz)	Rated power (KW)	Voltage (V)	Current (A)	Sound Level [dB(A)]	Weight (Kg)
1	1RSC20-32 0.2T	50	0.2	200-240 Δ / 345-415Y	1.75 Δ / 1.0Y	46	5
A	1RSC20-32 0.2T	60	0.23	220-275 Δ / 380-480Y	1.75 Δ / 1.0Y	48	5
2	1RSC20-32 0.2M	50	0.2	115 / 230	3.0 / 1.5	46	6
B	1RSC20-32 0.2M	60	0.23	115 / 230	3.2 / 1.6	48	6



Model	A	B	C	D	E	F	G	H	J	K	L	M	N	O	ØP
1RSC20-32 0.2T	198	212	85	179	196	220	108	115	100	65	90	40	45	34	1¼"
1RSC20-32 0.2M	198	212	85	179	196	220	108	115	100	65	90	40	45	34	1¼"

Model	Q	ØR	S	U	YxZ	X-Holes	ØX
1RSC20-32 0.2T	60	8.5	2	M6X17	M6x15	0°/120°/240°	140
1RSC20-32 0.2M	60	8.5	2	M6X17	M6x15	0°/120°/240°	140



Madan Technologies
Maagan Michael
D. N. Menashe
3780500 Israel

Tel: +972-4-6243353
Fax: +972-4-6243366
sales@madantec.com
www.madantec.com