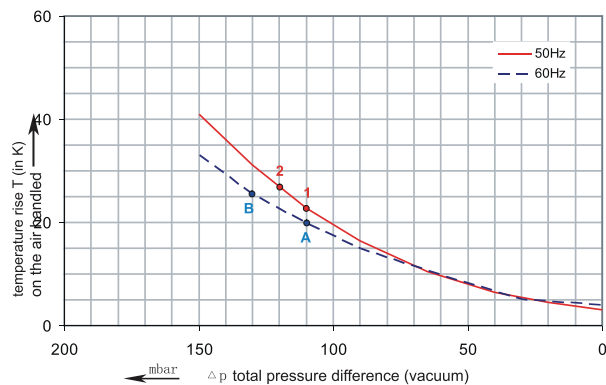
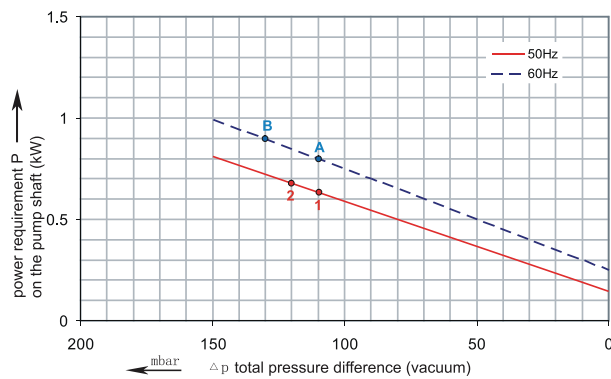
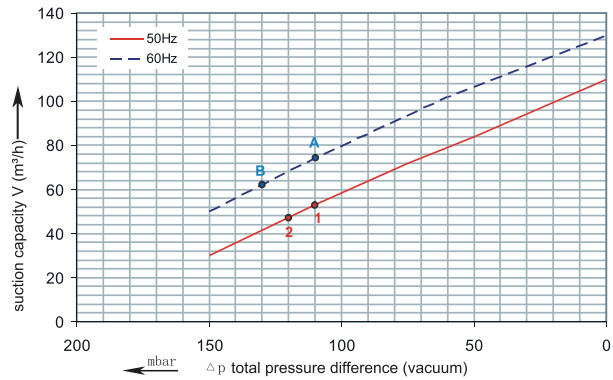




## 1RSC 27-32

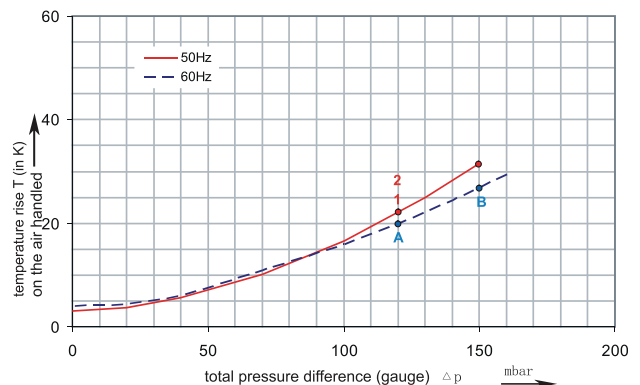
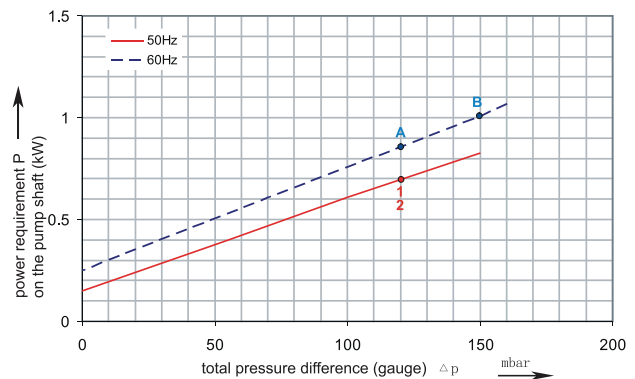
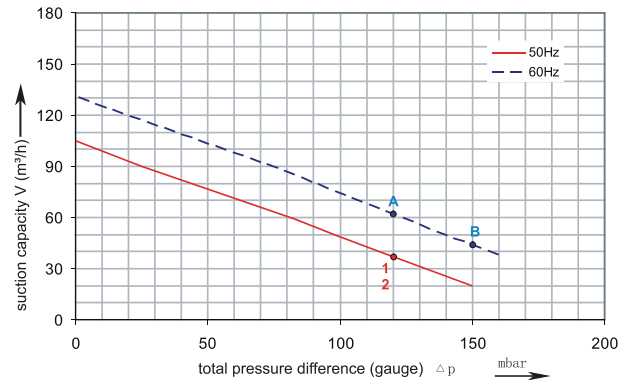
Performance curve for Vacuum pump



The performance curves are based on air at a temperature of 15 °C and an atmospheric pressure of 1013 mbar with a tolerance of +/- 10 %. The total pressure differences are valid for suction and ambient temperatures up to 25 °C. For other conditions please confer with us.

## 1RSC 27-32

Performance curve for Compressor



Each RSC type can be applied both as vacuum pump and compressor in continuous operation over the total stated performance curve range. The motors are available as standard for the input voltage range of 50 and 60 Hz and for protection category IP 55 as well as approved for UL and CSA.



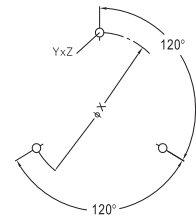
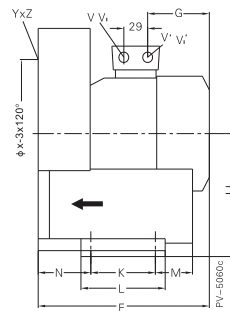
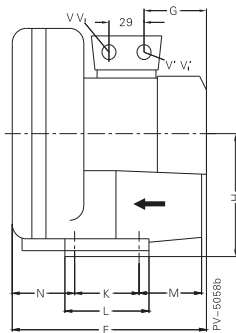
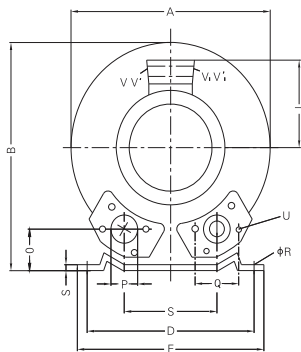
Madan Technologies  
Maagan Michael  
D. N. Menashe  
3780500 Israel

Tel: +972-4-6243353  
Fax: +972-4-6243366  
sales@madantec.com  
www.madantec.com

# RENOVA

## 1RSC 27-32

Curve No.	Model	Freq. (Hz)	Rated power (KW)	Voltage (V)	Current (A)	Sound Level [dB(A)]	Weight (Kg)
1	1RSC27-32 0.5T	50	0.55	200-240 $\Delta$ / 345-415Y	2.8 $\Delta$ / 1.2Y	55	11
A	1RSC27-32 0.5T	60	0.63	220-275 $\Delta$ / 380-480Y	3.0 $\Delta$ / 1.0Y	57	11
2	1RSC27-32 0.5M	50	0.55	115 / 230	6.4 / 3.7	55	13
B	1RSC27-32 0.5M	60	0.62	115 / 230	9.0 / 4.5	57	13



Model	A	B	C	D	E	F	G	H	J	K	L	M	N	O	ØP
1RSC27-32 0.5T	268	272	93	205	230	260	135	141	111	83	108	82	69	41	1 1/4"
1RSC27-32 0.5M	268	272	93	205	230	260	135	141	111	83	108	82	69	41	1 1/4"

Model	Q	ØR	S	U	YxZ	X-Holes	ØX
1RSC27-32 0.5T	64	10	2.5	M6X17	M6x15	0°/120°/240°	160
1RSC27-32 0.5M	64	10	2.5	M6X17	M6x15	0°/120°/240°	160