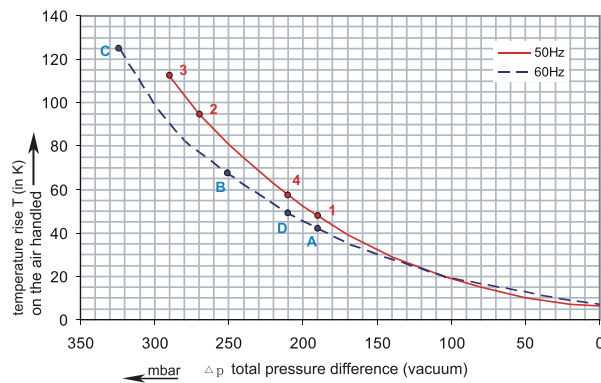
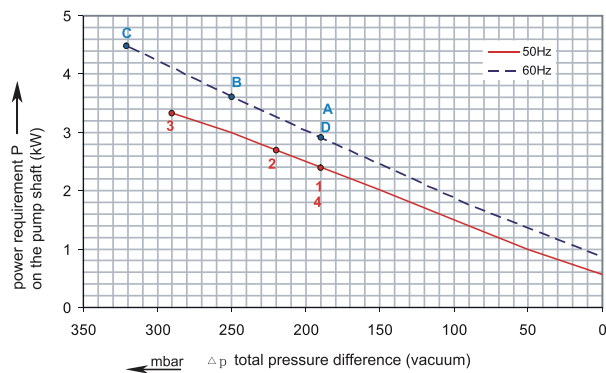
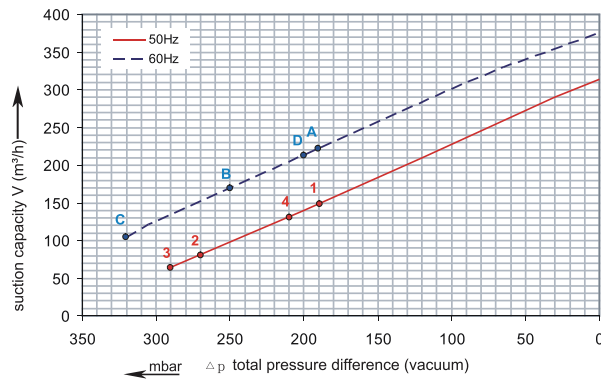




## 1RSC 38-50

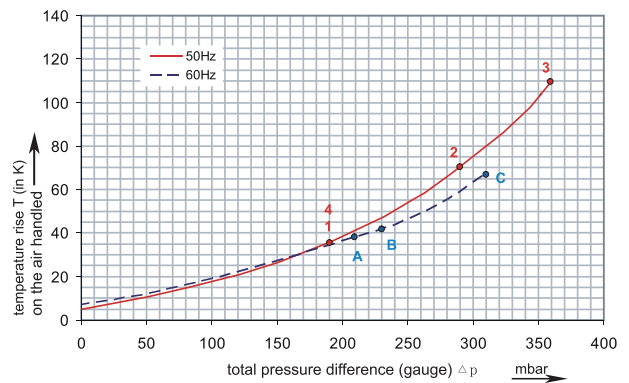
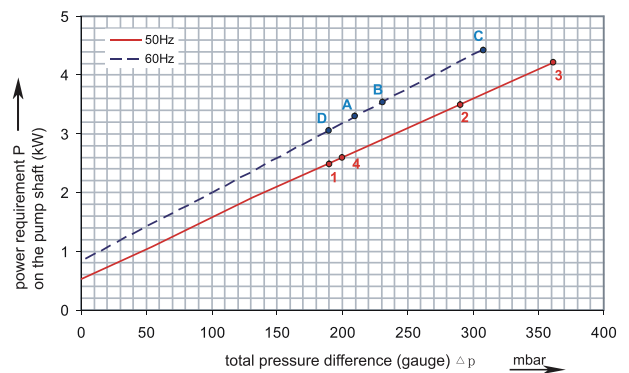
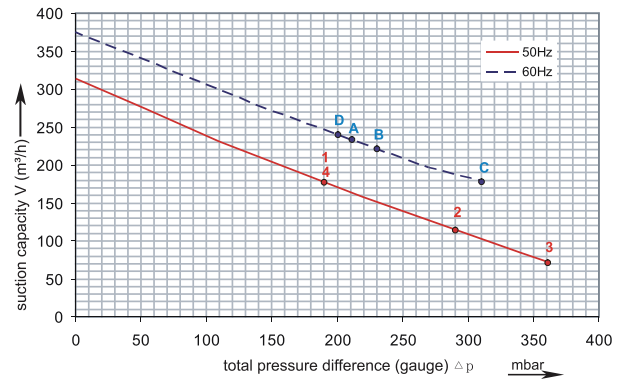
Performance curve for Vacuum pump



The performance curves are based on air at a temperature of 15 °C and an atmospheric pressure of 1013 mbar with a tolerance of +/- 10 %. The total pressure differences are valid for suction and ambient temperatures up to 25 °C. For other conditions please confer with us.

## 1RSC 38-50

Performance curve for Compressor

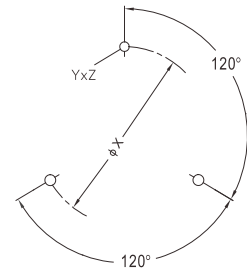
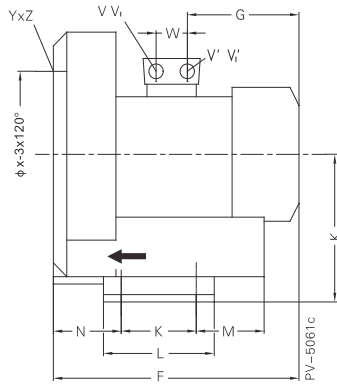
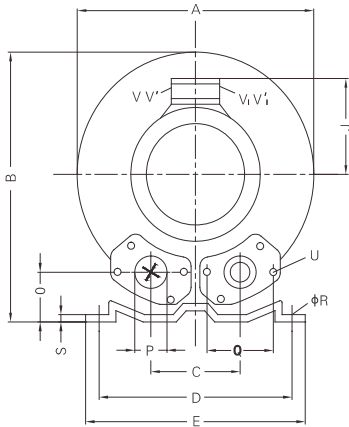


Each RSC type can be applied both as vacuum pump and compressor in continuous operation over the total stated performance curve range. The motors are available as standard for the input voltage range of 50 and 60 Hz and for protection category IP 55 as well as approved for UL and CSA.

# RENOVA

## 1RSC 38-50

Curve No.	Model	Freq. (Hz)	Rated power (KW)	Voltage (V)	Current (A)	Sound Level [dB(A)]	Weight (Kg)
1	1RSC38-50 2.2T	50	2.2	200-240Δ / 345-415Y	9.7Δ / 5.6Y	69	30
A	1RSC38-50 2.2T	60	2.55	220-275Δ / 380-480Y	10.3Δ / 6.0Y	72	30
2	1RSC38-50 3.0T	50	3.0	200-240Δ / 345-415Y	12.5Δ / 7.2Y	69	36
B	1RSC38-50 3.0T	60	3.45	220-275Δ / 380-480Y	12.6Δ / 7.3Y	72	36
3	1RSC38-50 4.0T	50	4.0	345-415Δ / 600-720Y	9.0Δ / 5.2Y	69	40
C	1RSC38-50 4.0T	60	4.6	380-480Δ / 660-720Y	9.0Δ / 5.2Y	72	40
4	1RSC38-50 2.2M	50	2.2	115 / 230	25.6 / 12.8	72	30
D	1RSC38-50 2.2M	60	2.55	115 / 230	25.6 / 12.8	74	30



Model	A	B	C	D	E	F	G	H	J	K	L	M	N	O	ØP
1RSC38-50 2.2T	382	384	125	290	325	377	191	197	128	140	180	84	109	54	2"
1RSC38-50 3.0T	382	384	125	290	325	409	188	197	135	140	180	84	109	54	2"
1RSC38-50 4.0T	382	384	125	290	325	432	209	197	148	140	180	84	109	54	2"
1RSC38-50 2.2M	382	384	125	290	325	404	218	197	128	140	180	84	109	54	2"

Model	Q	ØR	S	U	YxZ	X-Holes	ØX
1RSC38-50 2.2T	83	15	4.5	M8x17	M10x20	0°/120°/240°	240
1RSC38-50 3.0T	83	15	4.5	M8x17	M10x20	0°/120°/240°	240
1RSC38-50 4.0T	83	15	4.5	M8x17	M10x20	0°/120°/240°	240
1RSC38-50 2.2M	83	15	4.5	M8x17	M10x20	0°/120°/240°	240