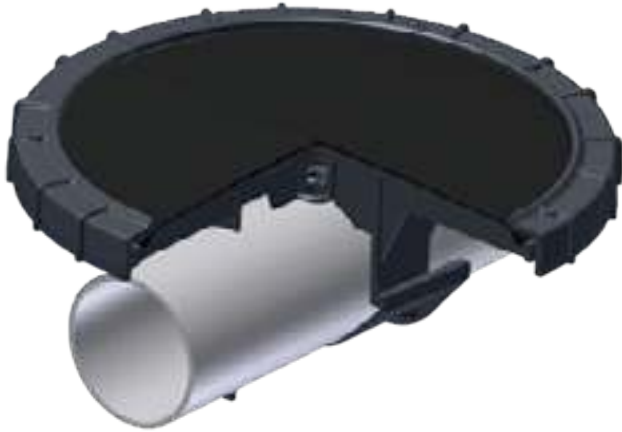
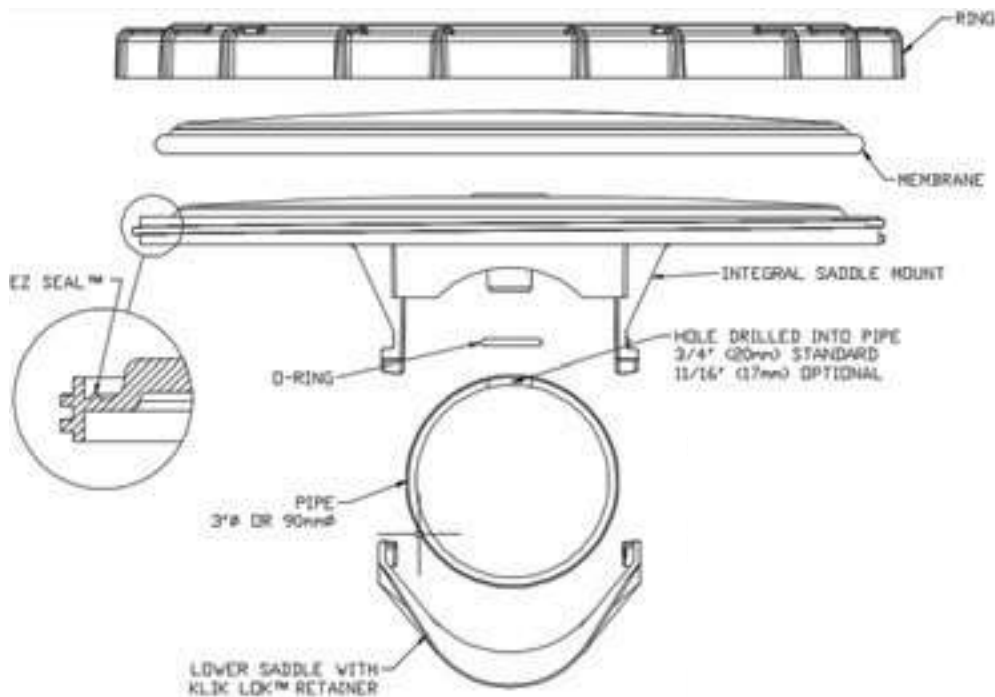


# FlexAir™ ISM Disc Integral Saddle Mount



- Glass-fiber-reinforced polypropylene construction for maximum chemical, temperature, and UV resistance
- Premium quality membrane materials available: EPDM, silicone, urethane, PTFE MATRIX™
- High-capacity membrane option available for maximum airflow and low operating pressure
- Triple-check valve design minimizes entry of liquid/solids into piping. Ideal for on / off applications
- Integral Saddle Mount provides ease of installation and maintenance with maximum mechanical strength
- Mounts on any pipe material (PVC, ABS, CPVC, SS, etc.)
- 12" disc available to fit 3" and 90 mm pipe sizes; 9" disc available to fit 3", 4", 90 mm, and 110 mm pipe sizes
- Patented EZ-Seal™ for quick membrane installation



## METRIC

Diffuser Type/ Perforation	Design Airflow m <sup>3</sup> N/h	Overall Diameter mm	Active Surface Area m <sup>2</sup>	Dry Weight kg
9" Nanopore	0-4	273	0.038	0.85
9" Micropore	0-9.5	273	0.038	0.85
9" High-Cap	0-16	273	0.038	0.85
12" Nanopore	0-6	336	0.059	1.2
12" Micropore	0-16	336	0.059	1.2
12" High-Cap	0-29	336	0.059	1.2

## ENGLISH

Diffuser Type/ Perforation	Design Airflow scfm	Overall Diameter in	Active Surface Area ft <sup>2</sup>	Dry Weight lb
9" Nanopore	0-3	10.75	0.41	1.9
9" Micropore	0-6	10.75	0.41	1.9
9" High-Cap	0-10	10.75	0.41	1.9
12" Nanopore	0-4	13.20	0.64	2.6
12" Micropore	0-10	13.20	0.64	2.6
12" High-Cap	0-18	13.20	0.64	2.6

## FlexAir™ ISM Disc: Integral Saddle Mount Diffuser



### Processes:

Biological Aeration  
Activated Sludge Processes  
Oxidation Ditch  
Sequence Batch Reactors (SBR)  
Membrane Bio Reactors (MBR)  
Moving Bed Bio Reactors (MBBR)  
Sludge Stabilization/Digestion  
Package Plants



### Applications:

Municipal Wastewater  
Industrial Wastewater  
Fixed Grid Systems  
Lift-Out Systems  
Floating Systems  
Tank Mixing  
High Oxygen Transfer  
Low Head Loss



### Industries:

Food and Drink  
Dairy and Cheese  
Pulp and Paper  
Oil and Gas  
Animal Processing  
Leachate  
Energy and Power  
Pharmaceutical



EDI has demonstrated success in more than 7,000 installations in over 100 countries worldwide—serving over 400 million people.

Please contact your local office below for details of our proven products, systems, and processes.



### EDI Europe

Design, Manufacturing & Warehouse  
Tel: +44-1295-810581  
edi.Europe@EnvironmentalDynamics.com

### Germany

Design Office  
Tel: +49-(0)9073 921212  
edi.Germany@EnvironmentalDynamics.com

### France

Design Office  
Tel: +33-(0)-781-548-529  
edi.France@EnvironmentalDynamics.com

### North America: Global Headquarters

Design, Manufacturing and Warehouse  
Tel: +1-573-474-9456  
edi.NorthAmerica@EnvironmentalDynamics.com

### Mexico

Design Office  
Tel: 1-877-334-2478  
edi.Mexico@EnvironmentalDynamics.com

### Singapore (SEA)

Design and Warehouse  
Tel: +65-6521-4536  
edi.Asia@EnvironmentalDynamics.com

### China

Design Office  
Tel: +86-10-5957-4336  
edi.China@EnvironmentalDynamics.com

### Japan

Design Office  
Tel: +81-3-5789-9140  
edi.Japan@EnvironmentalDynamics.com

### India

Design and Manufacturing Office  
Tel: +91-22-2422-4228  
edi.India@EnvironmentalDynamics.com