



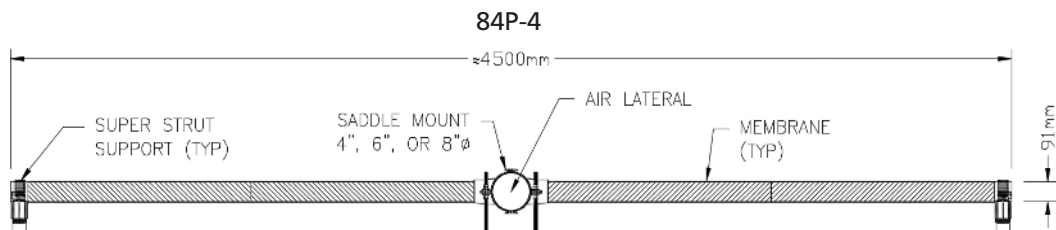
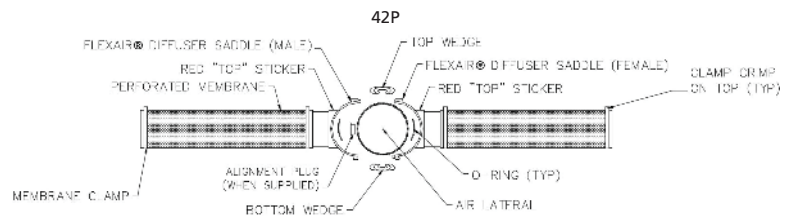
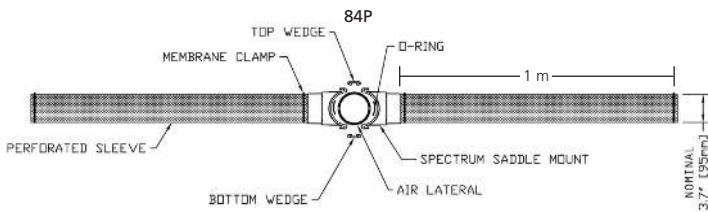
PRODUCT SPECIFICATIONS

FlexAir™ Magnum

Fine Bubble Flexible Membrane Diffuser



- Ideal for coarse bubble upgrades
- Efficient geometry supports high-density installations of over 65% floor coverage
- Non-buoyant design for reduced uplift and stress on mounting connection
- Premium quality membranes available in EPDM, urethane, and Matrix Plus™ for reduced fouling and minimum maintenance
- Non-metallic construction available for maximum chemical, temperature, and UV resistance
- Triple-check valve design minimizes entry of liquid/solids into piping. Ideal for on/off applications



METRIC					ENGLISH				
Model	Typical Airflow	Overall Length	Operational Weight	Dry Weight	Model	Typical Airflow	Overall Length	Operational Weight	Dry Weight
	m ³ /h	mm	kg	kg		scfm	in	lb	lb
42P micro	0–16	1390	2.6	3.2	42P micro	0–10	54.8	5.8	7.1
42P high-cap	0–28	1390	2.6	3.2	42P high-cap	0–18	54.8	5.8	7.1
84P micro	0–32	2400	2.9	5.2	84P micro	0–20	94.3	6.3	11
84P high-cap	0–55	2400	2.9	5.2	84P high-cap	0–35	94.3	6.3	11
84P-4 micro	0–64	4880	16.6	10.4	84P-4 micro	0–40	192	36.7	23
84P-4 high-cap	0–110	4880	16.6	10.4	84P-4 high-cap	0–70	192	36.7	23

- * Values listed are per tube unless noted
- Optimum oxygen transfer efficiency is achieved when operating in the middle to low end of the airflow range.
- The approximate operating pressure of the diffuser at the mid-range is 10–22.5 inches H₂O (2.5–5.6kPa).
- Operating the unit at the high end of the range will result in reduced performance and increased operating pressure.
- Use the maximum airflow value for short term operations such as peak loads or system maintenance.

FlexAir™ Magnum: Tube Diffuser



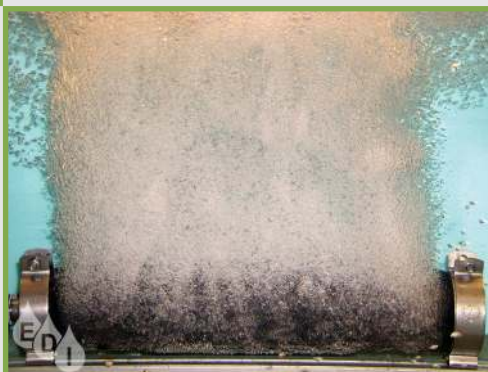
Processes:

- Biological Aeration
- Activated Sludge Processes
- Oxidation Ditch
- Sequence Batch Reactors (SBR)
- Membrane Bio Reactors (MBR)
- Moving Bed Bio Reactors (MBBR)
- Sludge Stabilization/Digestion
- Package Plants



Applications:

- Municipal Wastewater
- Industrial Wastewater
- Fixed Grid Systems
- Lift-Out Systems
- Floating Systems
- Tank Mixing
- High Oxygen Transfer
- Low Head Loss



Industries:

- Food and Drink
- Dairy and Cheese
- Pulp and Paper
- Oil and Gas
- Animal Processing
- Leachate
- Energy and Power
- Pharmaceutical



EDI has demonstrated success in more than 7,000 installations in over 100 countries worldwide—serving over 400 million people.

Please contact your local office below for details of our proven products, systems, and processes.



EDI Europe

Design, Manufacturing & Warehouse
Tel: +44-1295-810581
edi.Europe@EnvironmentalDynamics.com

Germany

Design Office
Tel: +49-(0)9073 921212
edi.Germany@EnvironmentalDynamics.com

France

Design Office
Tel: +33-(0)-781-548-529
edi.France@EnvironmentalDynamics.com

North America: Global Headquarters

Design, Manufacturing and Warehouse
Tel: +1-573-474-9456
edi.NorthAmerica@EnvironmentalDynamics.com

Mexico

Design Office
Tel: +1-877-334-2478
edi.Mexico@EnvironmentalDynamics.com

Singapore (SEA)

Design and Warehouse
Tel: +65-6521-4536
edi.Asia@EnvironmentalDynamics.com

China

Design Office
Tel: +86-10-5957-4336
edi.China@EnvironmentalDynamics.com

Japan

Design Office
Tel: +81-3-5789-9140
edi.Japan@EnvironmentalDynamics.com

India

Design and Manufacturing Office
Tel: +91-22-2422-4228
edi.India@EnvironmentalDynamics.com