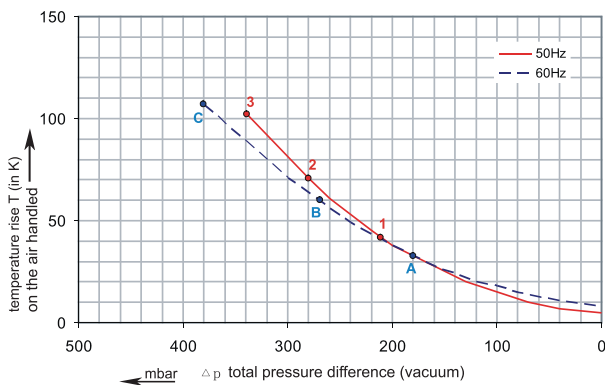
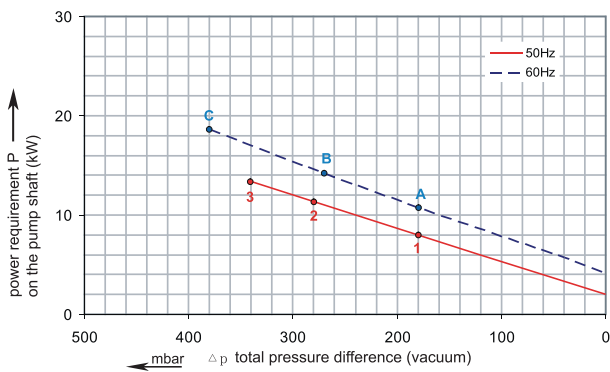
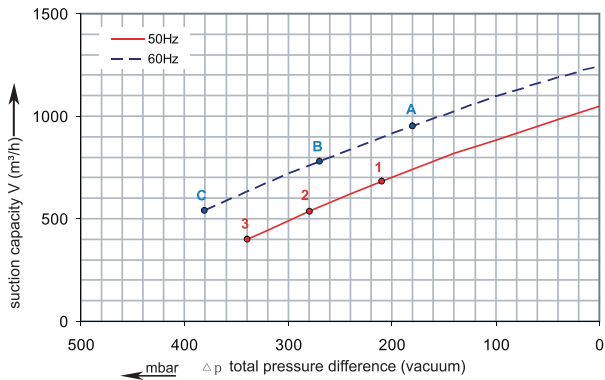




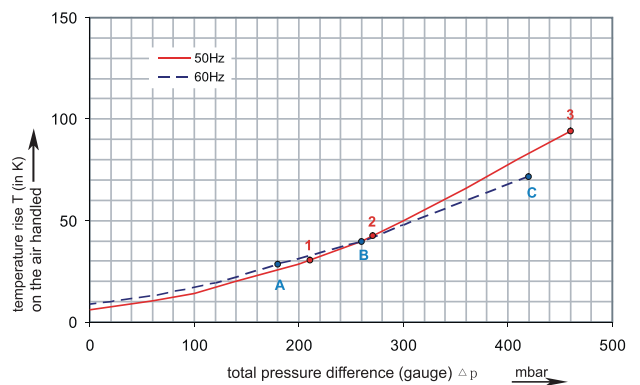
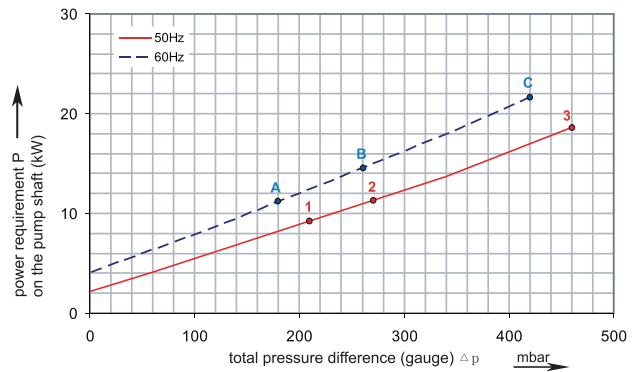
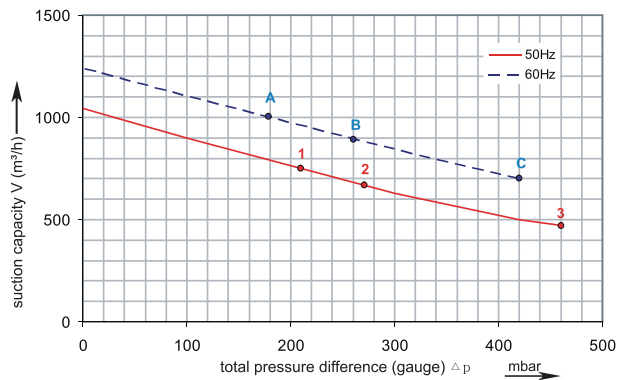
1RSC 55-100

Performance curve for Vacuum pump



1RSC 55-100

Performance curve for Compressor



The performance curves are based on air at a temperature of 15 °C and an atmospheric pressure of 1013 mbar with a tolerance of +/- 10 %.
The total pressure differences are valid for suction and ambient temperatures up to 25 °C.
For other conditions please confer with us.

Each RSC type can be applied both as vacuum pump and compressor in continuous operation over the total stated performance curve range. The motors are available as standard for the input voltage range of 50 and 60 Hz and for protection category IP 55 as well as approved for UL and CSA.



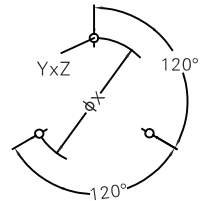
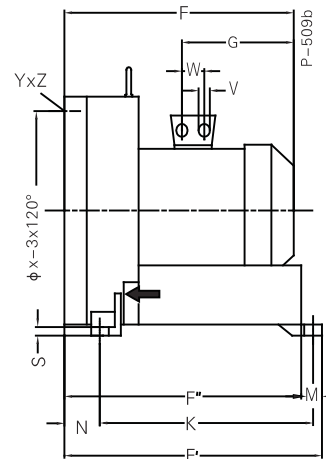
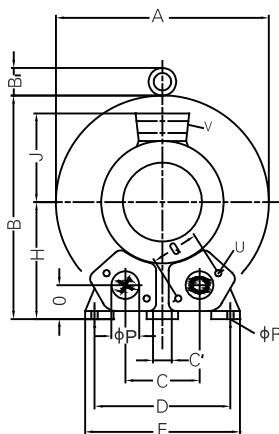
Madan Technologies
Maagan Michael
D. N. Menashe
3780500 Israel

Tel: +972-4-6243353
Fax: +972-4-6243366
sales@madantec.com
www.madantec.com

RENOVA

1RSC 55-100

Curve No.	Model	Freq. (Hz)	Rated power (KW)	Voltage (V)	Current (A)	Sound Level [dB(A)]	Weight (Kg)
1	1RSC55-100 8.5T	50	8.5	345-415 Δ / 600-720Y	18.2 Δ / 10.5Y	74	93
A	1RSC55-100 8.5T	60	9.8	380-480 Δ / 660-720Y	18.2 Δ / 10.5Y	79	93
2	1RSC55-100 12.5T	50	12.5	345-415 Δ / 600-720Y	28.0 Δ / 16.2Y	74	116
B	1RSC55-100 12.5T	60	14.5	380-480 Δ / 660-720Y	29.0 Δ / 16.7Y	79	116
3	1RSC55-100 18.5T	50	18.5	345-415 Δ / 600-720Y	37.0 Δ / 21.0Y	74	126
C	1RSC55-100 18.5T	60	21.3	380-480 Δ / 660-720Y	39.0 Δ / 22.5Y	79	126



Model	A	B	C	D	E	F'	G	H	J	K	M	N	O	ØP
1RSC55-100 8.5T	550	569	207	360	415	644	268	300	167	533	39	89	92	4"
1RSC55-100 12.5T	550	569	207	360	415	644	345	300	197	533	39	89	92	4"
1RSC55-100 18.5T	550	569	207	360	415	644	345	300	197	533	39	89	92	4"

Model	Q	ØR	S	U	V	ØX	YxZ	X-Holes
1RSC55-100 8.5T	150	15	21	M12x30	4xM32x1.5	490	M12x30	0°/120°/240°
1RSC55-100 12.5T	150	15	21	M12x30	4xM32x1.5	490	M12x30	0°/120°/240°
1RSC55-100 18.5T	150	15	21	M12x30	4xM32x1.5	490	M12x30	0°/120°/240°