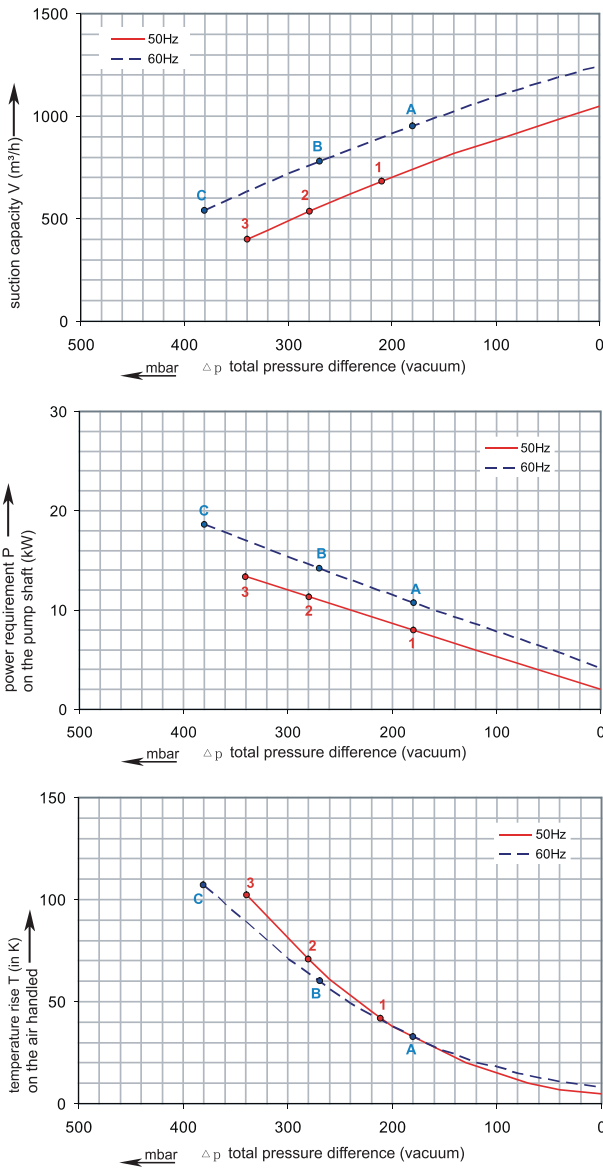




# 1RSC 55-100

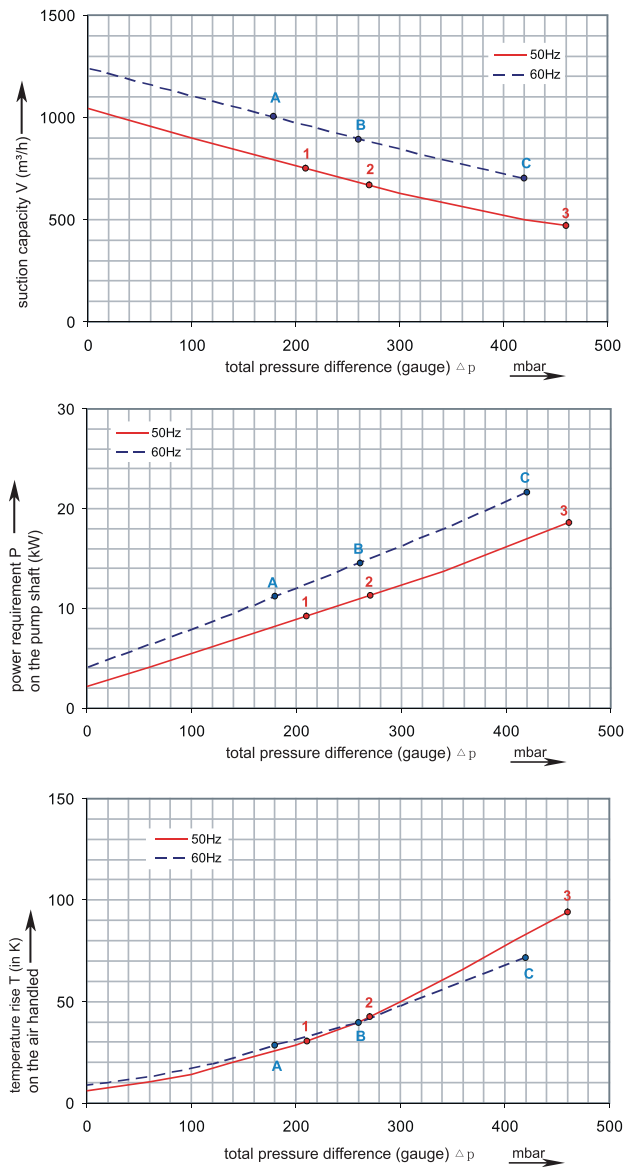
Performance curve for Vacuum pump



The performance curves are based on air at a temperature of 15 °C and an atmospheric pressure of 1013 mbar with a tolerance of +/- 10 %.  
 The total pressure differences are valid for suction and ambient temperatures up to 25 °C.  
 For other conditions please confer with us.

# 1RSC 55-100

Performance curve for Compressor



Each RSC type can be applied both as vacuum pump and compressor in continuous operation over the total stated performance curve range. The motors are available as standard for the input voltage range of 50 and 60 Hz and for protection category IP 55



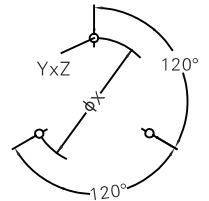
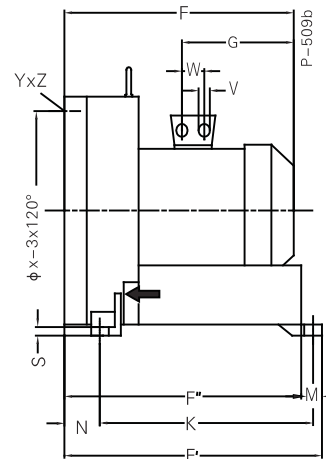
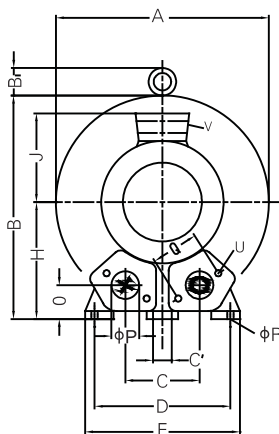
Madan Technologies  
 Maagan Michael  
 D. N. Menashe  
 3780500 Israel

Tel: +972-4-6243353  
 Fax: +972-4-6243366  
 sales@madantec.com  
 www.madantec.com

# RENOVA

## 1RSC 55-100

| Curve No. | Model            | Freq. (Hz) | Rated power (KW) | Voltage (V)                 | Current (A)           | Sound Level [dB(A)] | Weight (Kg) |
|-----------|------------------|------------|------------------|-----------------------------|-----------------------|---------------------|-------------|
| 1         | 1RSC55-100 8.5T  | 50         | 8.5              | 345-415 $\Delta$ / 600-720Y | 18.2 $\Delta$ / 10.5Y | 74                  | 93          |
| A         | 1RSC55-100 8.5T  | 60         | 9.8              | 380-480 $\Delta$ / 660-720Y | 18.2 $\Delta$ / 10.5Y | 79                  | 93          |
| 2         | 1RSC55-100 12.5T | 50         | 12.5             | 345-415 $\Delta$ / 600-720Y | 28.0 $\Delta$ / 16.2Y | 74                  | 116         |
| B         | 1RSC55-100 12.5T | 60         | 14.5             | 380-480 $\Delta$ / 660-720Y | 29.0 $\Delta$ / 16.7Y | 79                  | 116         |
| 3         | 1RSC55-100 18.5T | 50         | 18.5             | 345-415 $\Delta$ / 600-720Y | 37.0 $\Delta$ / 21.0Y | 74                  | 126         |
| C         | 1RSC55-100 18.5T | 60         | 21.3             | 380-480 $\Delta$ / 660-720Y | 39.0 $\Delta$ / 22.5Y | 79                  | 126         |



| Model            | A   | B   | C   | D   | E   | F'  | G   | H   | J   | K   | M  | N  | O  | ØP |
|------------------|-----|-----|-----|-----|-----|-----|-----|-----|-----|-----|----|----|----|----|
| 1RSC55-100 8.5T  | 550 | 569 | 207 | 360 | 415 | 644 | 268 | 300 | 167 | 533 | 39 | 89 | 92 | 4" |
| 1RSC55-100 12.5T | 550 | 569 | 207 | 360 | 415 | 644 | 345 | 300 | 197 | 533 | 39 | 89 | 92 | 4" |
| 1RSC55-100 18.5T | 550 | 569 | 207 | 360 | 415 | 644 | 345 | 300 | 197 | 533 | 39 | 89 | 92 | 4" |

| Model            | Q   | ØR | S  | U      | V         | ØX  | YxZ    | X-Holes      |
|------------------|-----|----|----|--------|-----------|-----|--------|--------------|
| 1RSC55-100 8.5T  | 150 | 15 | 21 | M12x30 | 4xM32x1.5 | 490 | M12x30 | 0°/120°/240° |
| 1RSC55-100 12.5T | 150 | 15 | 21 | M12x30 | 4xM32x1.5 | 490 | M12x30 | 0°/120°/240° |
| 1RSC55-100 18.5T | 150 | 15 | 21 | M12x30 | 4xM32x1.5 | 490 | M12x30 | 0°/120°/240° |