

Speedmatic 1305 & 1309

Driver for a one 3-phase pump with variable speed, it can be communicated to other identical devices managing a maximum of 4 pumps.

Three-phase pump managed by INVERTER. General electric supply is 400 Vac. It can be mounted individually (only one pump) or in group of 2, 3 or 4 pumps communicated and operating in MASTER-SLAVE mode with alternated sequence of operation. The communication of 2 devices is direct using cables. The communication of 3 or 4 units is carried out through the communication center SPEEDCENTER.



1305 MASTER

1309 MASTER



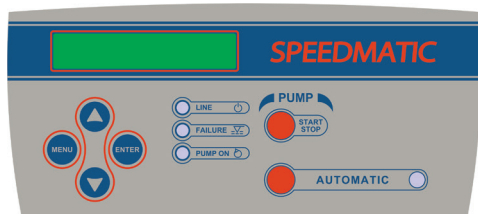
OPERATING CHARACTERISTICS

- Pump managed by frequency converter (inverter).
- ART function (Automatic Reset Test). If the device has been stopped due to the action of the safety system against dry operation, the ART tries to connect the pump, with a programmed periodicity because the water supply could have been restored.
- Possibility of being mounted next to other identical devices -up to 4- operating in MASTER-SLAVE mode: the group will be formed by a main device configured like MASTER and the rest of devices configured like SLAVES. The operating system is alternated, the device configured as MASTER is the responsible of the control but it doesn't imply that is first in starting up when there is flow demand in the network.
- Automatic restore system after an interruption of power supply. System restores the previous mode keeping the configuration parameters.
- Volt-free contact for monitoring the alarms displayed in screen originated by irregularities or problems of the system. Optional.
- Electronic input for detection of minimum water level in aspiration tank- optional-. This system is independent of the safety system against dry-running operation.
- Inner pressure transducer with digital indicator,
- Inner current sensor with instantaneous digital reading.
- Control and information panel with LCD screen.
- Register of operational controls. Information about: operating hours, counter of starts, counter of connections to the power supply.
- Register of alarms. Information about type and number of alarms since the starting up of the device.
- Open PID in the expert menu.

TECHNICAL CHARACTERISTICS

	1305	1309
Power supply voltage	~3 x 400 Vac	~3 x 400 Vac
Frecuence	50/60 Hz	50/60 Hz
Max current per phase	5A(~3 x 400 Vac)	9A(~3 x 400 Vac)
Máx. peak of current	20% 10 seg	20% 10 seg
Max operating pressure	16 bar	16 bar
Range of set pressure	05 ÷ 12 bar	05 ÷ 12 bar
Protection degree	IP55	IP55
Max water temperature	40 °C	40 °C
Max environment temperature	50 °C	50 °C
Net weight (without cables)	3,5 kg	5 kg
Inlet thread	G1 1/4" M	G1 1/4" M
Outlet thread	G1 1/4" M	G1 1/4" M
Max flow	15.000 l/h	15.000 l/h

CONTROL PANEL

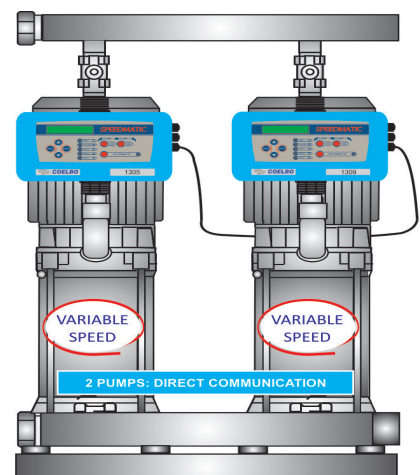
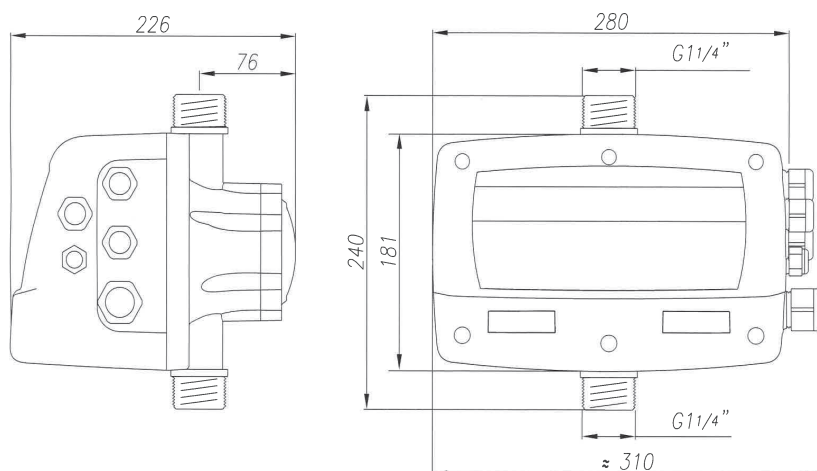


Control panel includes LCD screen, warning leds, push-buttons, START-STOP, AUTOMATIC and configuration system.

SAFETY SYSTEMS

- Control and safety system against overloads.
- Electronic control and safety system against dry-running operation.
- Control and safety system against wrong supply voltage.
- Control and safety system against short-circuit between output phases.

DIMENSIONS



Coelbo Pump drivers