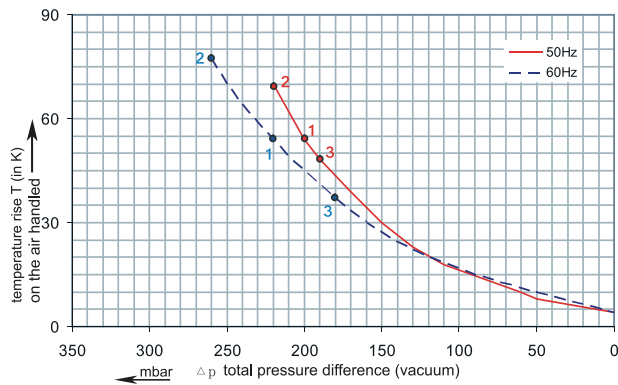
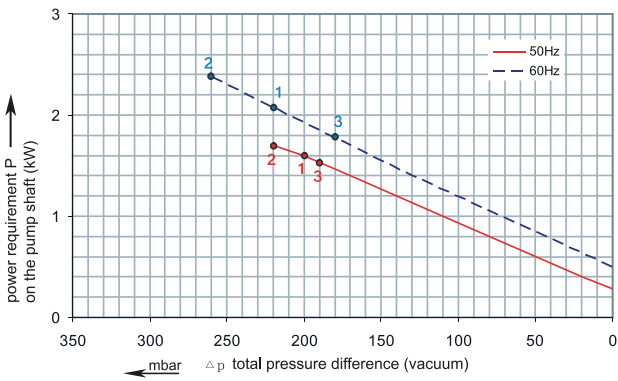
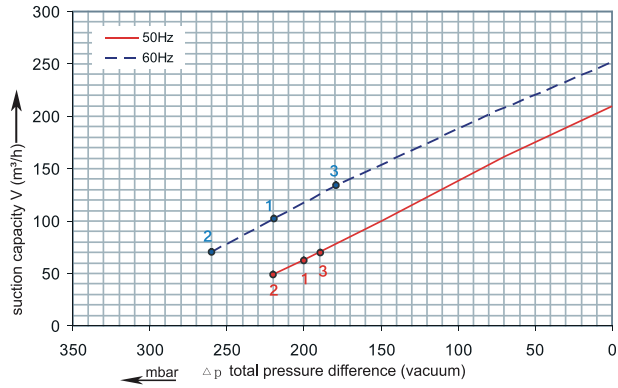


# RENOVA

## 1RSC 33-50

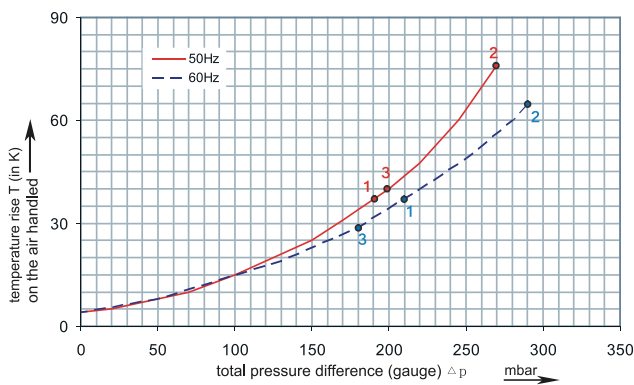
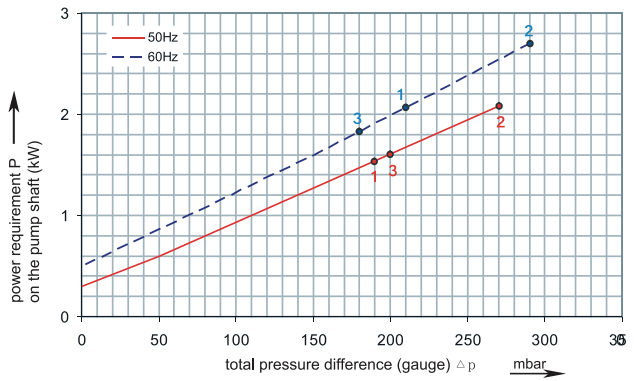
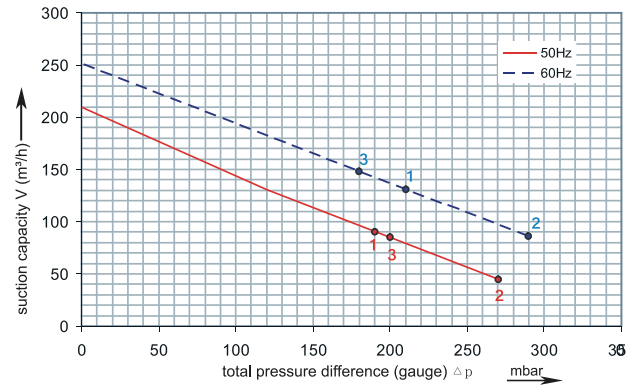
Performance curve for Vacuum pump



The performance curves are based on air at a temperature of 15 °C and an atmospheric pressure of 1013 mbar with a tolerance of +/- 10 %.  
The total pressure differences are valid for suction and ambient temperatures up to 25 °C.  
For other conditions please confer with us

## 1RSC 33-50

Performance curve for Compressor

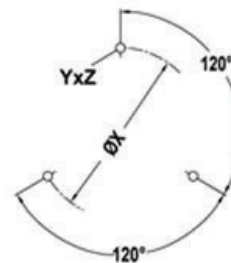
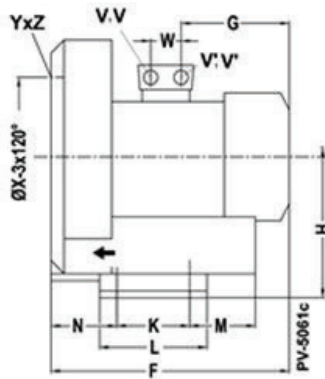
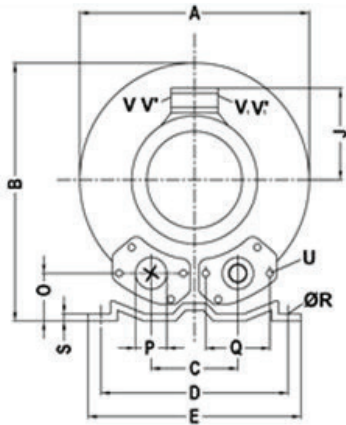


Each RSC type can be applied both as vacuum pump and compressor in continuous operation over the total stated performance curve range. The motors are available as standard for the input voltage range of 50 and 60 Hz and for protection category IP 55.

# RENOVA

## 1RSC 33-50

Curve No.	Model	Freq. (Hz)	Power (KW)	Max. Flow (m3/h)	Max. Vacuum (mbar)	Max. Pressure (mbar)	Voltage (V)	Current (A)	Inlet / Outlet	Noise (dBA)	Weight (Kg)
1	1RSC33/50 1.5T	50	1.6	210	-200	190	200-240Δ / 345-415Y	7.5Δ / 4.3Y	G 2"	64	23
		60	2.1	255	-220	210	220-275Δ / 380-480Y	7.6Δ / 4.4Y		70	
2	1RSC33/50 2.2T	50	2.2	210	-220	270	200-240Δ / 345-415Y	9.7Δ / 5.6Y	G 2"	64	25
		60	2.55	255	-260	290	220-275Δ / 380-480Y	10.0Δ / 5.8Y		70	
3	1RSC33/50 1.5M	50	1.5	210	-190	200	115 / 230	22.0 / 11.0	G 2"	64	26
		60	1.75	255	-180	180	115 / 230	24.0 / 12.0		70	



Model	A	B	C	D	E	F	G	H	J	K	L	M	N	O	ØP
1RSC33/50 1.5T	334	337	120	260	295	346	191	175	128	115	155	96	87	48	2"
1RSC33/50 2.2T	334	337	120	260	295	346	191	175	128	115	155	96	87	48	2"
1RSC33/50 1.5M	334	337	120	260	295	346	191	175	128	115	155	96	87	48	2"