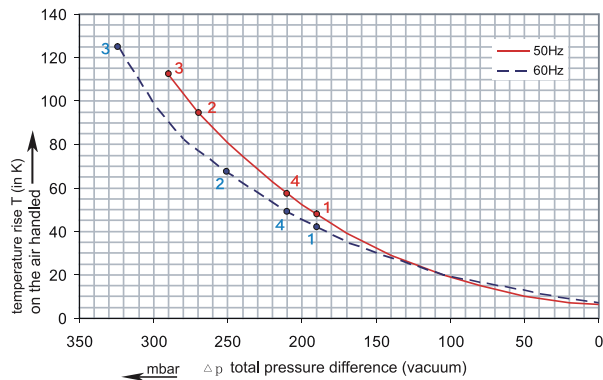
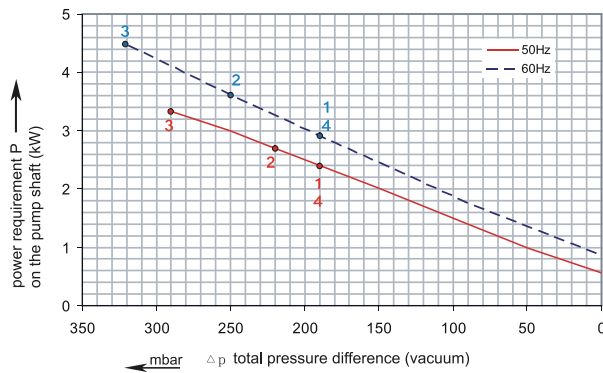
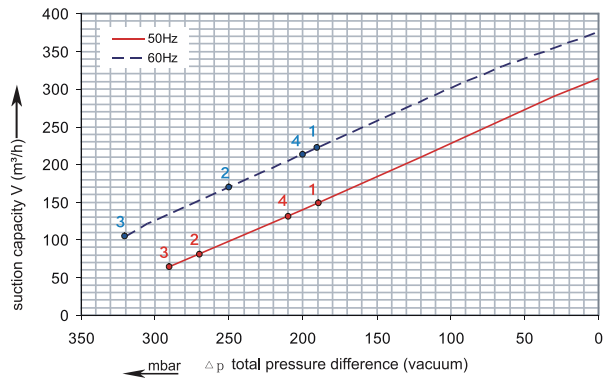


RENOVA

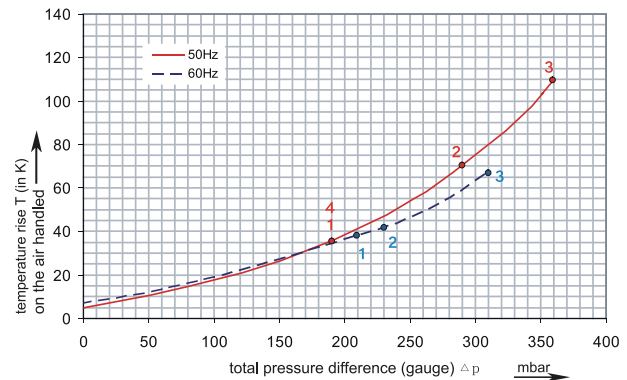
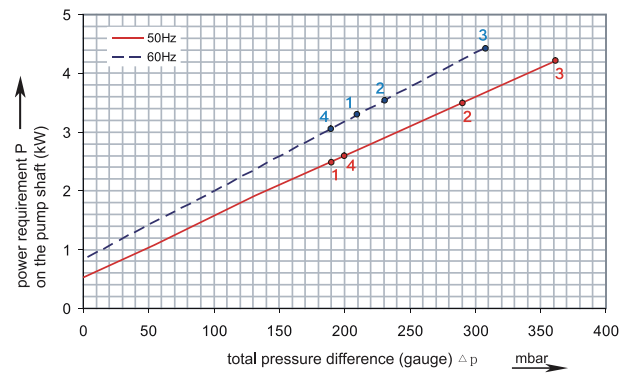
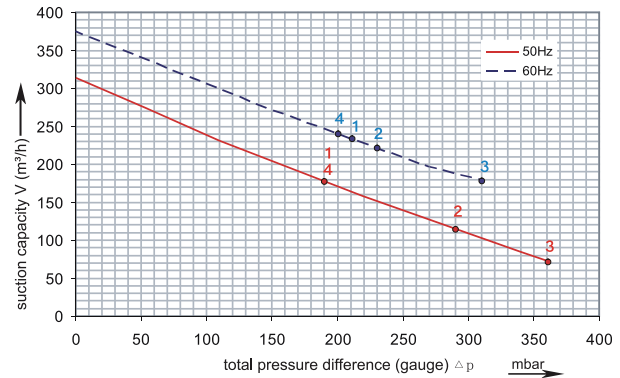
1RSC 38-50

Performance curve for Vacuum pump



1RSC 38-50

Performance curve for Compressor



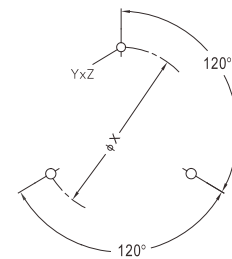
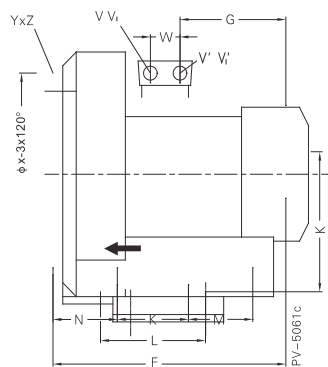
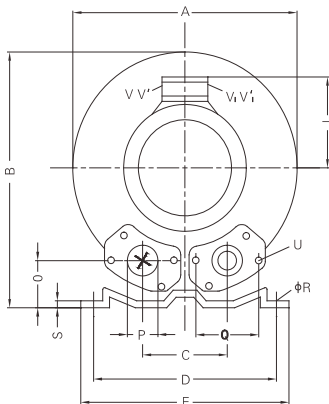
The performance curves are based on air at a temperature of 15 °C and an atmospheric pressure of 1013 mbar with a tolerance of +/- 10 %. The total pressure differences are valid for suction and ambient temperatures up to 25 °C. For other conditions please confer with us.

Each RSC type can be applied both as vacuum pump and compressor in continuous operation over the total stated performance curve range. The motors are available as standard for the input voltage range of 50 and 60 Hz and for protection category IP 55.

RENOVA

1RSC 38-50

Curve No.	Model	Freq. (Hz)	Power (KW)	Max. Flow (m3/h)	Max. Vacuum (mbar)	Max. Pressure (mbar)	Voltage (V)	Current (A)	Inlet / Outlet	Noise (dBA)	Weight (Kg)
1	1RSC38/50 2.2T	50	2.20	318	-190	190	200-240Δ/ 345-415Y	9.7Δ/ 5.6Y	G 2"	69	30
		60	2.55	376	-190	190	220-275Δ/ 380-480Y	10.0Δ/ 5.8Y		72	
2	1RSC38/50 3.0T	50	3.00	318	-260	270	200-240Δ/ 345-415Y	12.5Δ/ 7.2Y	G 2"	69	36
		60	3.45	376	-240	230	220-275Δ/ 380-480Y	12.6Δ/ 7.3Y		72	
3	1RSC38/50 4.0T	50	4.00	318	-290	360	345-415Δ/ 600-690Y	9.5Δ/ 5.5Y	G 2"	69	40
		60	4.6	376	-320	310	380-480Δ/ 660-720Y	9.5Δ/ 5.5Y		72	
4	1RSC38/50 2.2M	50	2.20	318	-190	190	230	12.8	G 2"	72	30
		60	2.55	376	-190	200	230	12.8		74	



1RSC38/50 2.2T	382	384	125	290	325	377	191	197	128	140	180	84	109	54	2"
1RSC38/50 3.0T	382	384	125	290	325	409	188	197	135	140	180	84	109	54	2"
1RSC38/50 4.0T	382	384	125	290	325	432	209	197	148	140	180	84	109	54	2"
1RSC38/50 2.2M	382	384	125	290	325	404	218	197	128	140	180	84	109	54	2"