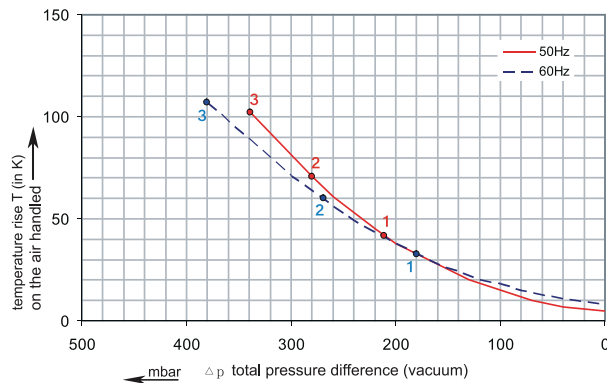
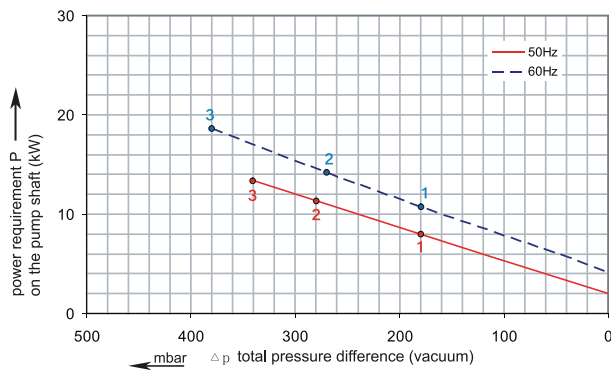
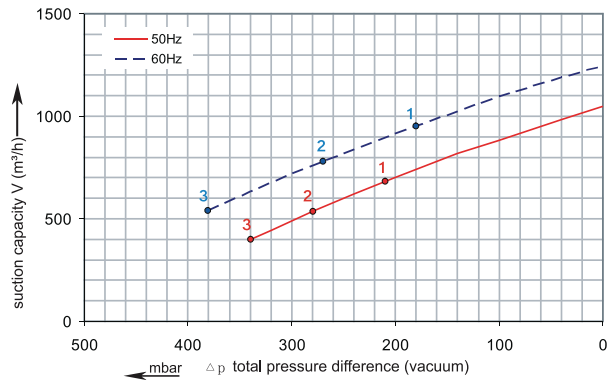


RENOVA

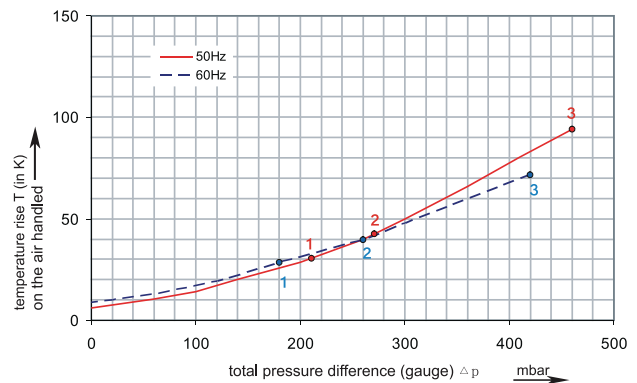
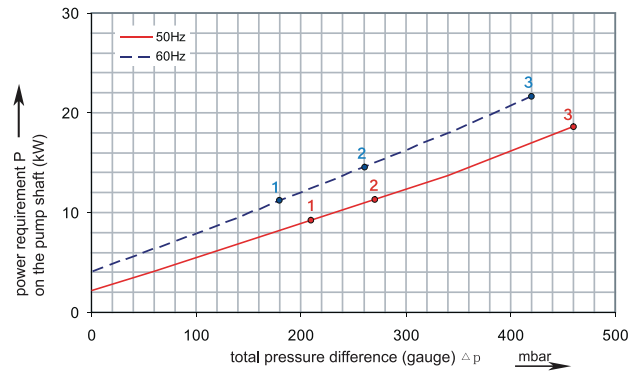
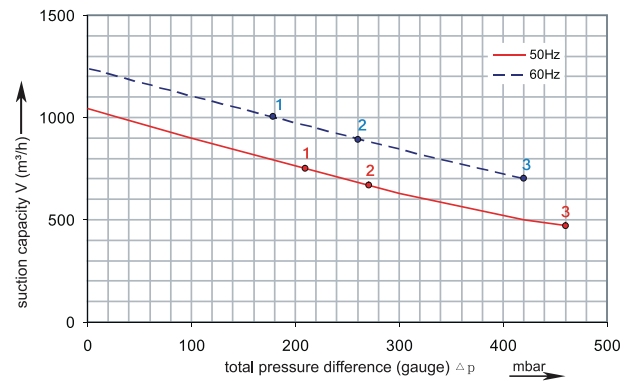
1RSC 55-100

Performance curve for Vacuum pump



1RSC 55-100

Performance curve for Compressor



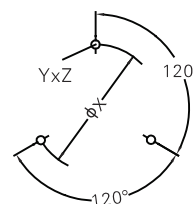
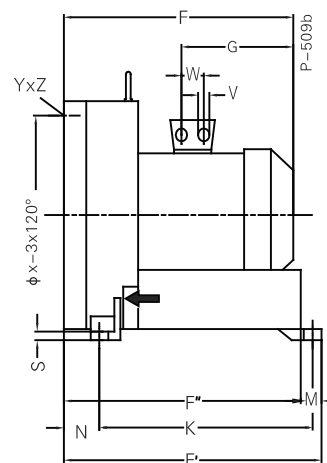
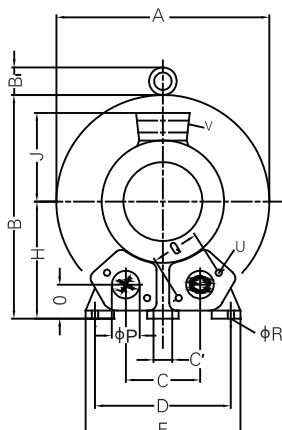
The performance curves are based on air at a temperature of 15 °C and an atmospheric pressure of 1013 mbar with a tolerance of +/- 10 %. The total pressure differences are valid for suction and ambient temperatures up to 25 °C. For other conditions please confer with us.

Each RSC type can be applied both as vacuum pump and compressor in continuous operation over the total stated performance curve range. The motors are available as standard for the input voltage range of 50 and 60 Hz and for protection category IP 55.

RENOVA

1RSC 55-100

Curve No.	Model	Freq. (Hz)	Power (KW)	Max. Flow (m3/h)	Max. Vacuum (mbar)	Max. Pressure (mbar)	Voltage (V)	Current (A)	Inlet / Outlet	Noise (dBA)	Weight (Kg)
1	1RSC55/100 8.5T	50	8.5	1050	-190	190	345-415Δ / 600-690Y	18.2Δ / 10.5Y	G 4"	74	93
		60	9.8	1250	-150	140	380-480Δ / 660-720Y	18.2Δ / 10.5Y		79	
2	1RSC55/100 12.5T	50	12.5	1050	-290	280	345-415Δ / 600-690Y	28.0Δ / 16.2Y	G 4"	74	116
		60	14.5	1250	-270	260	380-480Δ / 660-720Y	29.0Δ / 16.7Y		79	
3	1RSC55/100 18.5T	50	18.5	1050	-360	460	345-415Δ / 600-690Y	37.0Δ / 21.0Y	G 4"	74	126
		60	21.3	1250	-380	420	380-480Δ / 660-720Y	39.0Δ / 22.5Y		79	



Model	A	B	C	D	E	F	G	H	J	K	M	N	O	ØP
1RSC55/100 8.5T	550	569	207	360	415	644	268	300	167	533	39	89	92	4"
1RSC55/100 12.5T	550	569	207	360	415	644	345	300	197	533	39	89	92	4"
1RSC55/100 18.5T	550	569	207	360	415	644	345	300	197	533	39	89	92	4"