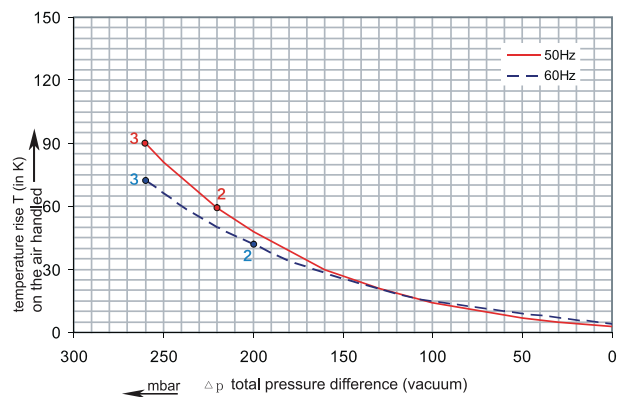
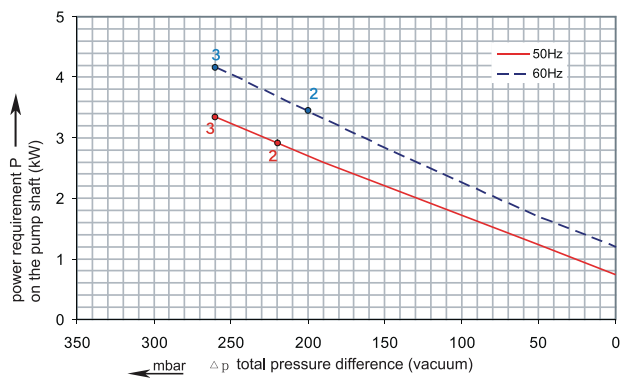
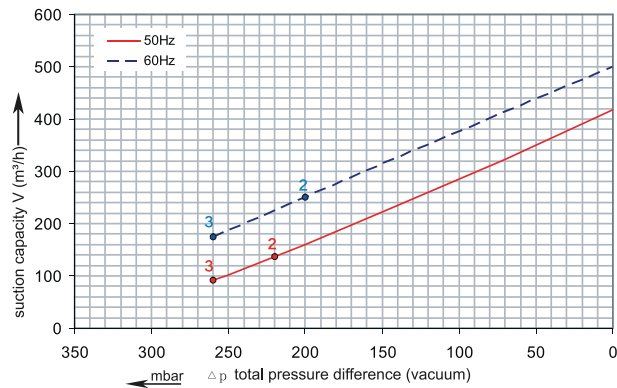


RENOVA

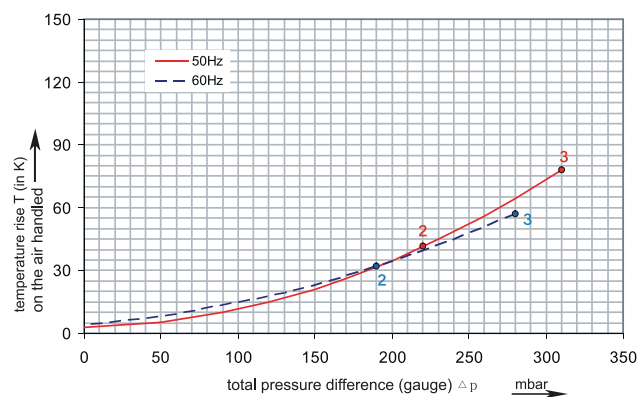
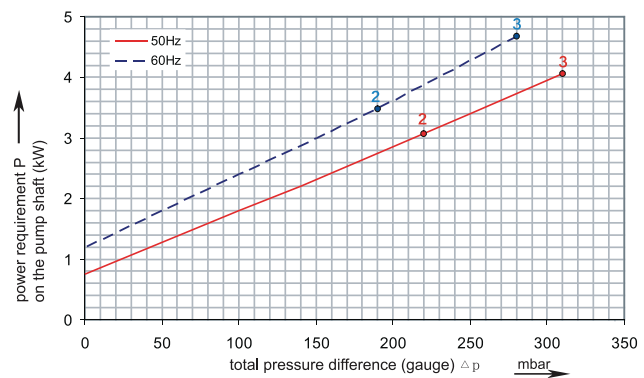
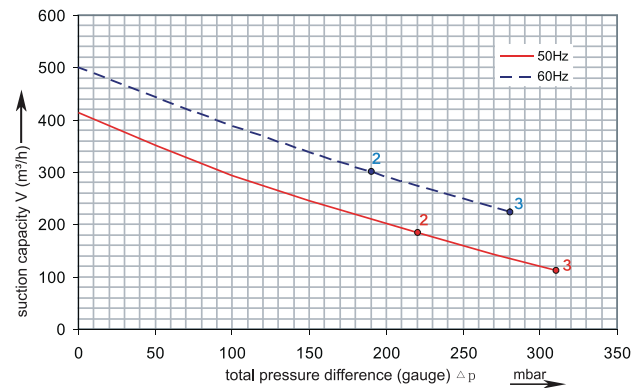
1RSCB 38-50

Performance curve for Vacuum pump



1RSCB 38-50

Performance curve for Compressor



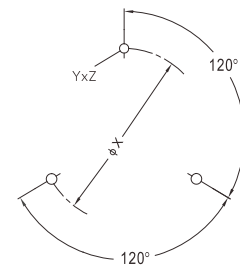
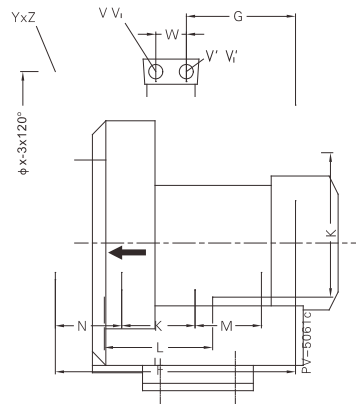
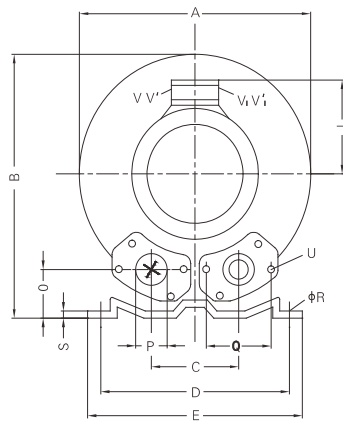
The performance curves are based on air at a temperature of 15 °C and an atmospheric pressure of 1013 mbar with a tolerance of +/- 10 %. The total pressure differences are valid for suction and ambient temperatures up to 25 °C. For other conditions please confer with us.

Each RSC type can be applied both as vacuum pump and compressor in continuous operation over the total stated performance curve range. The motors are available as standard for the input voltage range of 50 and 60 Hz and for protection category IP 55.

RENOVA

1RSCB 38-50

Curve No.	Model	Freq. (Hz)	Power (KW)	Max. Flow (m3/h)	Max. Vacuum (mbar)	Max. Pressure (mbar)	Voltage (V)	Current (A)	Inlet / Outlet	Noise (dBA)	Weight (Kg)
1	1RSCB38/50 3.0T	50	3.00	420	-220	200	200-240 Δ / 345-415Y	12.5 Δ / 7.2Y	G 2"	70	37
		60	3.45	500	-200	170	220-275 Δ / 380-480Y	12.6 Δ / 7.3Y		73	
2	1RSCB38/50 4.0T	50	4.00	420	-260	280	345-415 Δ / 600-690Y	9.5 Δ / 5.5Y	G 2"	70	43
		60	4.6	500	-260	260	380-480 Δ / 660-720Y	9.5 Δ / 5.5Y		73	



Model	A	B	C	D	E	F	G	H	J	K	L	M	N	O	ØP
1RSCB38/50 3.0T	382	384	125	290	325	419	189	197	135	140	180	84	109	54	2"
1RSCB38/50 4.0T	382	384	125	290	325	432	209	197	148	140	180	84	109	54	2"