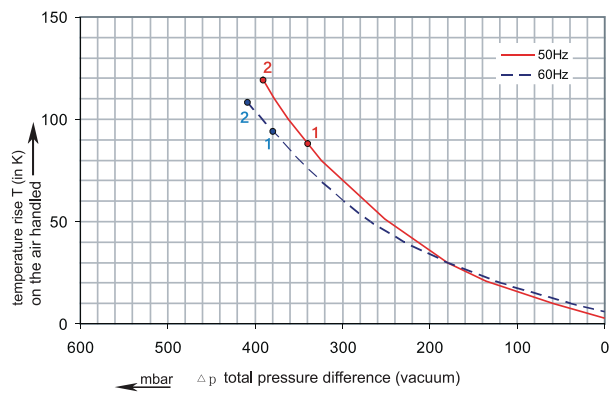
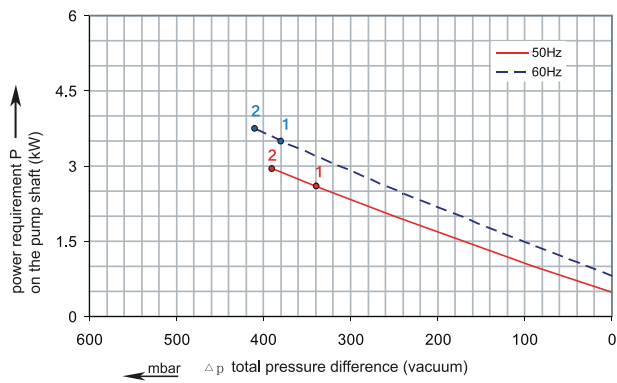
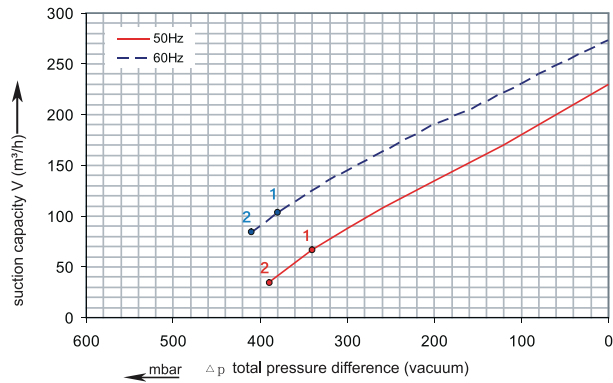


# RENOVA

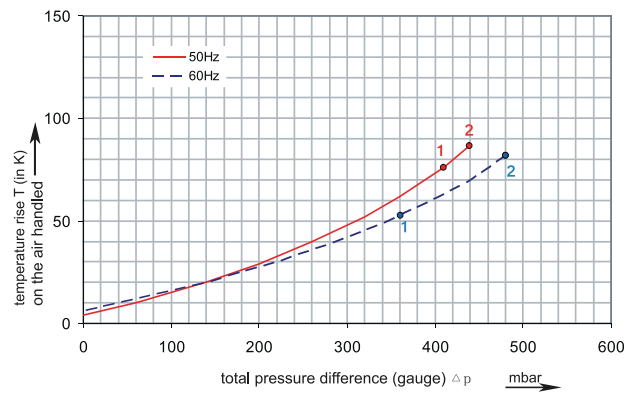
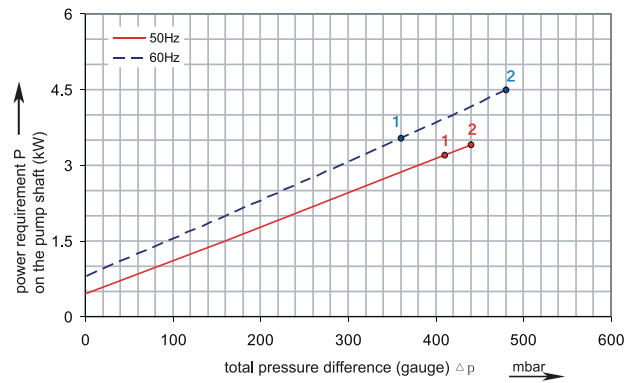
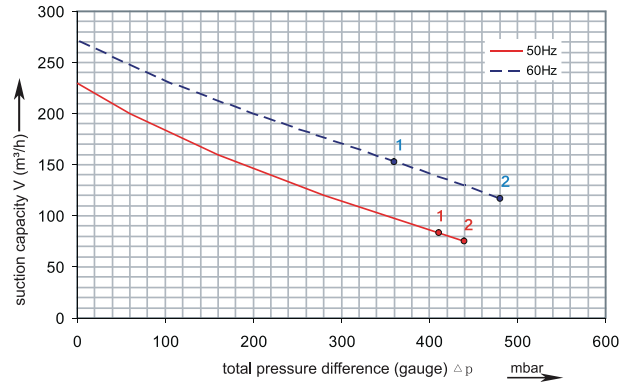
## 2RSC 37-50

Performance curve for Vacuum pump



## 2RSC 37-50

Performance curve for Compressor



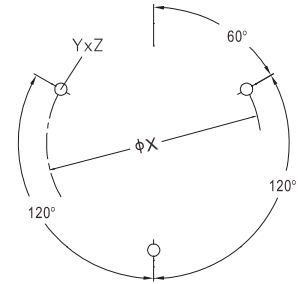
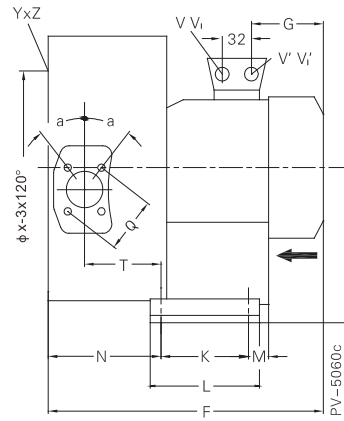
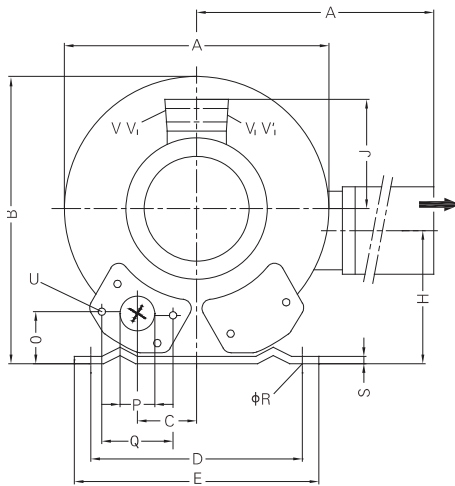
The performance curves are based on air at a temperature of 15 °C and an atmospheric pressure of 1013 mbar with a tolerance of +/- 10 %. The total pressure differences are valid for suction and ambient temperatures up to 25 °C. For other conditions please confer with us.

Each RSC type can be applied both as vacuum pump and compressor in continuous operation over the total stated performance curve range. The motors are available as standard for the input voltage range of 50 and 60 Hz and for protection category IP 55.

# RENOVA

## 2RSC 37-50

Curve No.	Model	Freq. (Hz)	Power (KW)	Max. Flow (m3/h)	Max. Vacuum (mbar)	Max. Pressure (mbar)	Voltage (V)	Current (A)	Inlet / Outlet	Noise (dBA)	Weight (Kg)
1	2RSC37/50 3.0T	50	3.0	230	-340	410	200-240Δ/ 345-415Y	12.5Δ/ 7.2Y	G 2"	72	40
		60	3.45	275	-380	360	220-275Δ/ 380-480Y	12.6Δ/ 7.3Y		74	
2	2RSC37/50 4.0T	50	4.0	230	-390	440	345-415Δ/ 600-690Y	9.5Δ/ 5.5Y	G 2"	72	44
		60	4.6	275	-410	480	380-480Δ/ 660-720Y	9.5Δ/ 5.5Y		74	



Model	A	A'	B	C	D	E	F	G	H	H'	J	K	L	M	N	O	ØP
2RSC37/50 3.0T	372	411	371	60	260	295	465	190	175	144	135	115	155	98	171	48	2"
2RSC37/50 4.0T	372	411	371	60	260	295	499	224	175	144	135	115	155	98	171	48	2"