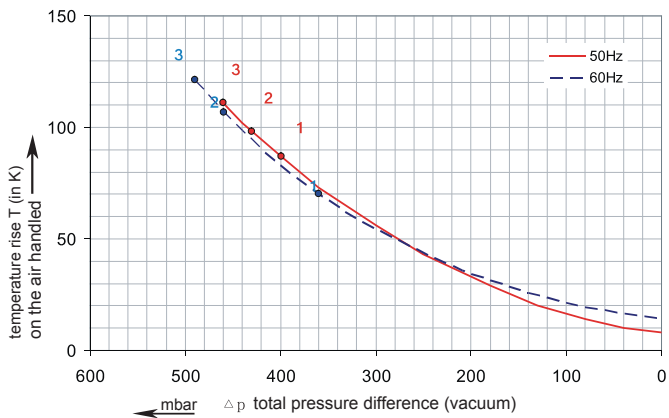
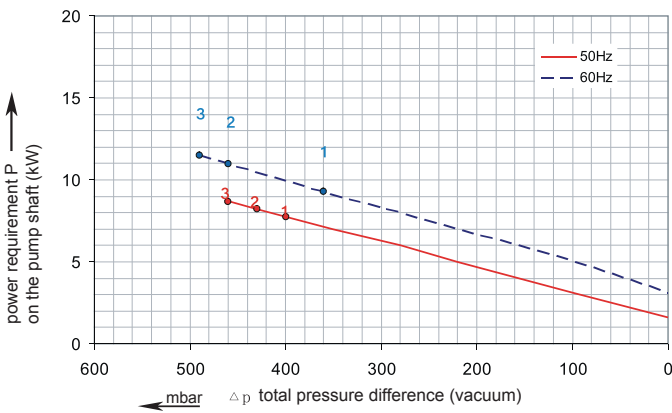
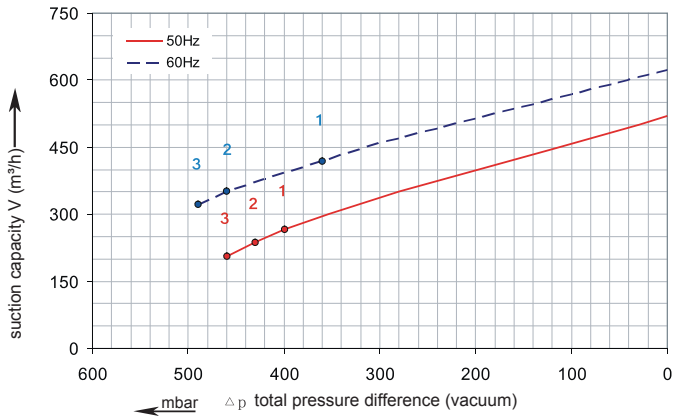




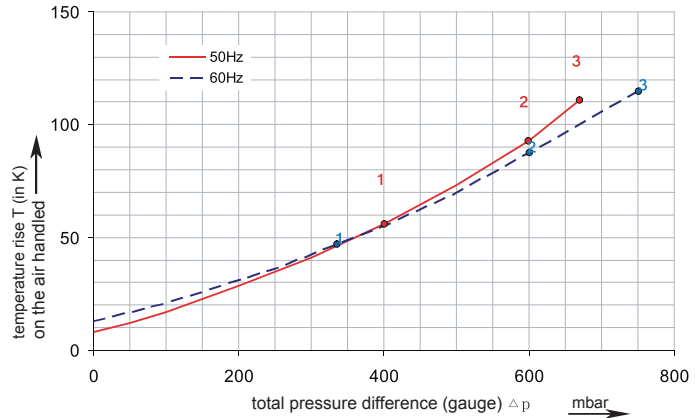
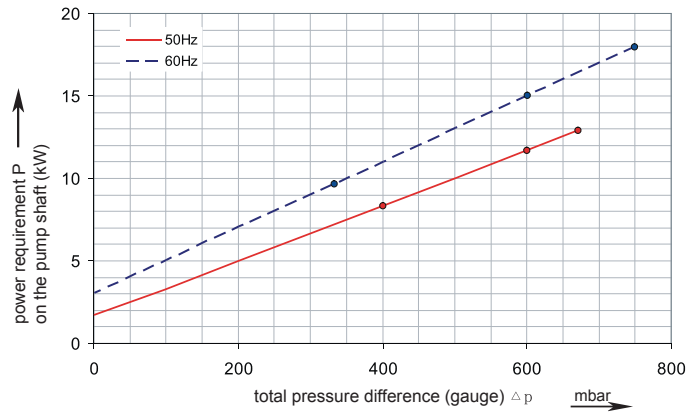
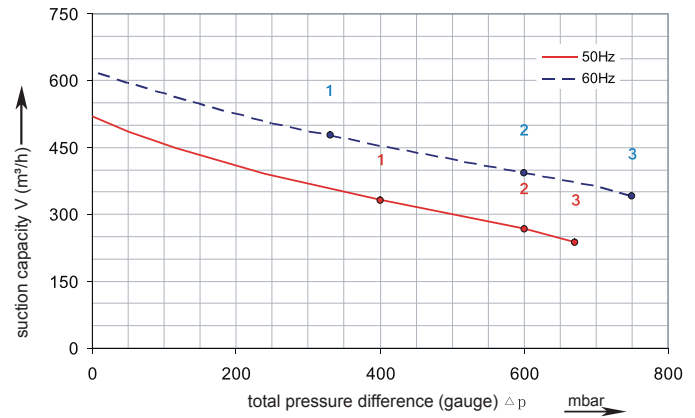
2RSC 50-65

Performance curve for Compressor



2RSC 50-65

Performance curve for Compressor



The performance curves are based on air at a temperature of 15 °C and an atmospheric pressure of 1013 mbar with a tolerance of +/- 10 %. The total pressure differences are valid for suction and ambient temperatures up to 25 °C. For other conditions please confer with us.

Each RSC type can be applied both as vacuum pump and compressor in continuous operation over the total stated performance curve range. The motors are available as standard for the input voltage range of 50 and 60 Hz and for protection category IP 55.



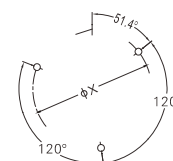
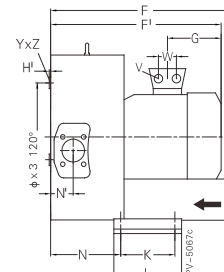
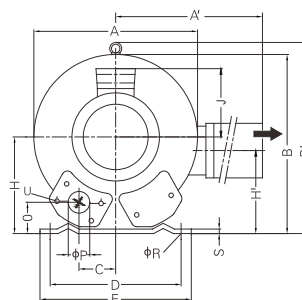
Madan Technologies
Maagan Michael
D. N. Menashe
3780500 Israel

Tel: +972-4-6243353
Fax: +972-4-6243366
sales@madantec.com
www.madantec.com

RENOVA

2RSC 50-65

Curve No.	Model	Freq. (Hz)	Power (KW)	Max. Flow (m3/h)	Max. Vacuum (mbar)	Max. Pressure (mbar)	Voltage (V)	Current (A)	Inlet / Outlet	Noise (dBA)	Weight (Kg)
1	2RSC50/65 7.5T	50	7.5	520	-400	400	345-415Δ / 600-690Y	16.7Δ / 9.6Y	G 2½"	74	86
		60	8.6	620	-360	330	380-480Δ / 660-720Y	17.3Δ / 10.0Y		78	
2	2RSC50/65 11.0T	50	11.0	520	-430	600	345-415Δ / 600-690Y	28.0Δ / 16.2Y	G 2½"	74	104
		60	12.6	620	-460	600	380-480Δ / 660-720Y	29.0Δ / 16.7Y		78	
3	2RSC50/65 15.0T	50	15.0	520	-460	670	345-415Δ / 600-690Y	32.5Δ / 18.8Y	G 2½"	74	120
		60	17.3	620	-490	750	380-480Δ / 660-720Y	34.5Δ / 19.9Y		78	



Model	A	A'	B	C	D	E	F'	G	H	H'	J	K	L	N	O	ØP
2RSC50/65 7.5T	500	549	490	76	356	394	589	226	240	199	148	170	217	236	65	2½"
2RSC50/65 11.0T	500	549	490	76	356	394	694	318	240	199	197	170	217	212	105	2½"
2RSC50/65 15.0T	500	549	490	152	356	394	694	318	240	199	197	170	217	212	105	2½"