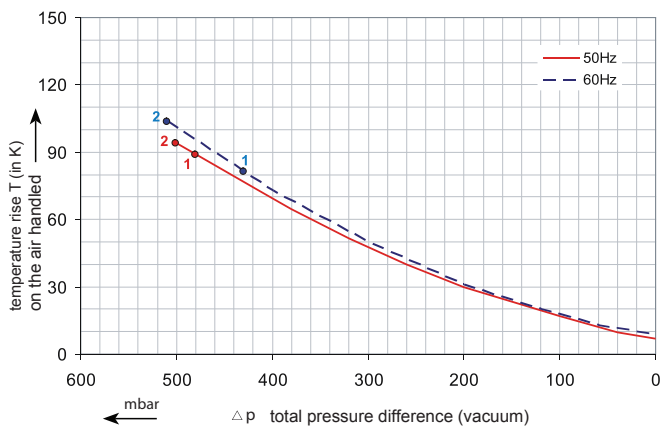
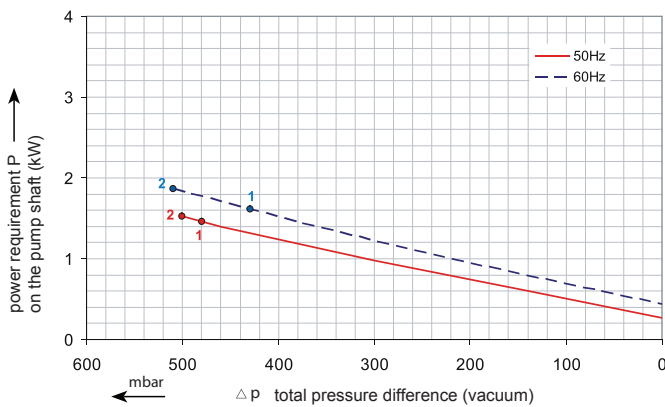
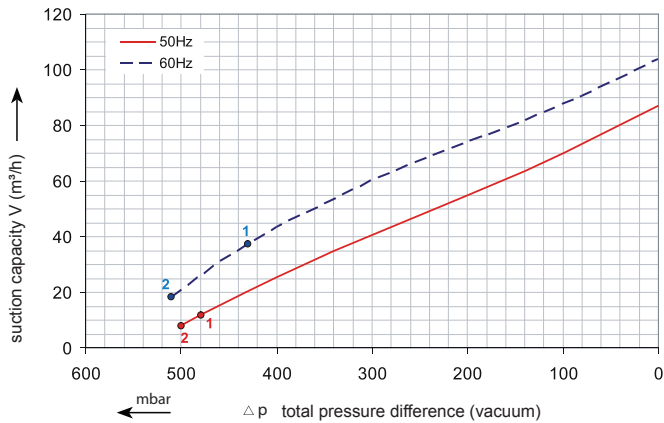


RENOVA

42RSC 36/32

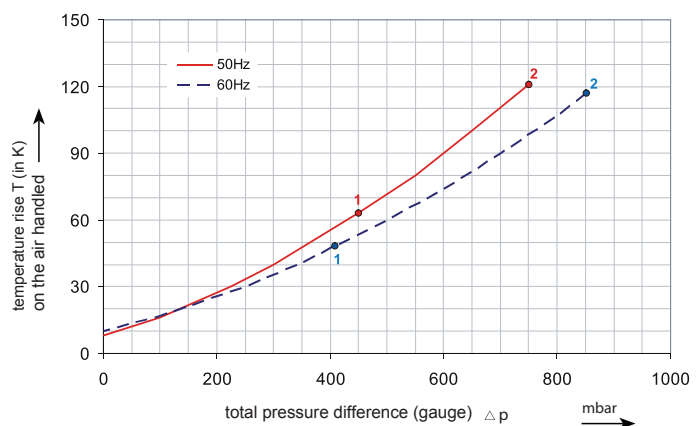
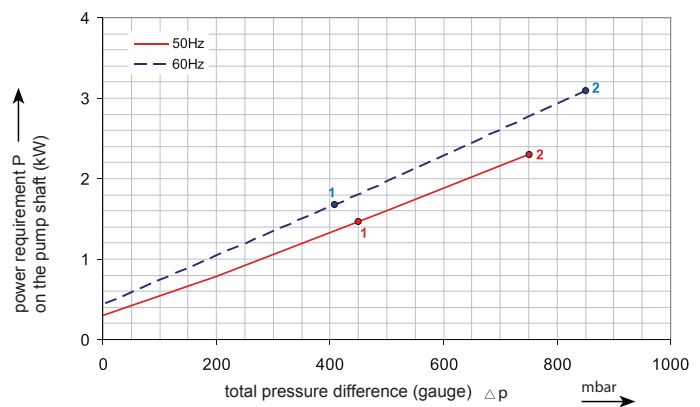
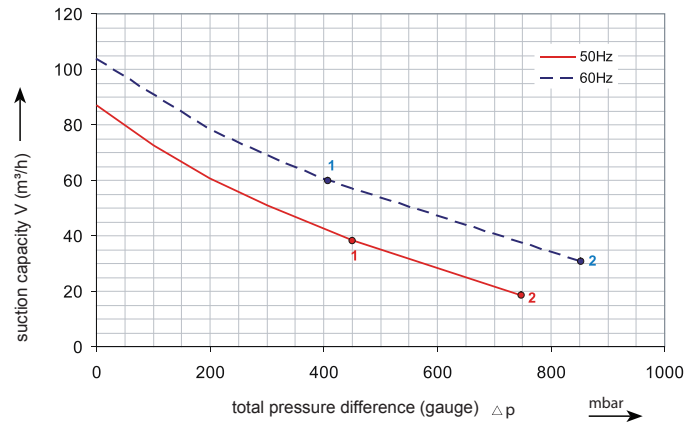
Performance curve for Vacuum pump



The performance curves are based on air at a temperature of 15 °C and an atmospheric pressure of 1013 mbar with a tolerance of +/- 10 %. The total pressure differences are valid for suction and ambient temperatures up to 25 °C. For other conditions please confer with us.

42RSC 36/32

Performance curve for Compressor

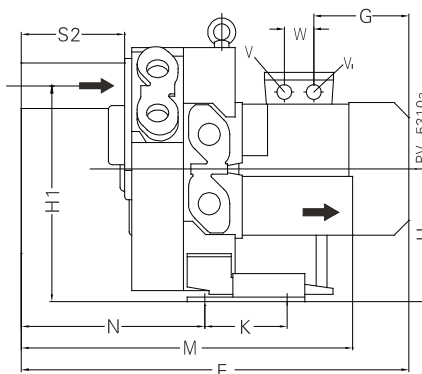
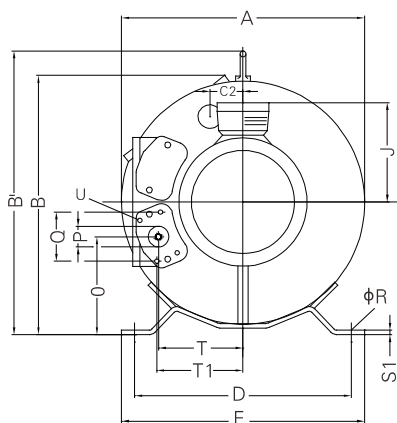
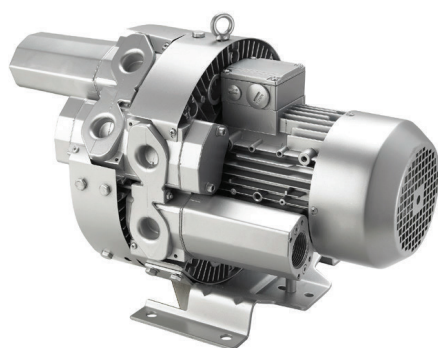


Each 42RSC type can be applied both as vacuum pump and compressor in continuous operation over the total stated performance curve range. The motors are available as standard for the input voltage range of 50 and 60 Hz and for protection category IP 55.

RENOVA

42RSC 36/32

Curve No.	Model	Freq. (Hz)	Power (KW)	Max. Flow (m3/h)	Max. Vacuum (mbar)	Max. Pressure (mbar)	Voltage (V)	Current (A)	Inlet / Outlet	Noise (dBA)	Weight (Kg)
1	42RSC36/32 1.5T	50	1.5	87	-480	450	200-240Δ/ 345-415Y	7.5Δ/ 4.3Y	G 1¼"	61	33
		60	1.75	105	-430	410	220-275Δ/ 380-480Y	7.6Δ/ 4.4Y		66	
2	42RSC36/32 3.3T	50	3.3	87	-500	750	200-240Δ/ 345-415Y	13.0Δ/ 7.5Y	G 1¼"	61	39
		60	3.8	105	-510	850	220-275Δ/ 380-480Y	13.8Δ/ 8.0Y		66	



Model	A	B	C²	D	E	F	G	H	H¹	J	K	M	N	O	ØP
42RSC36/32 1.5T	363	377	52	315	350	529	180	195	319	128	130	436	243	143	1¼"
42RSC36/32 3.3T	363	377	52	315	350	554	180	195	319	128	130	436	243	143	1¼"