

 Domestic use

 Agricultural use

 Industrial use



PERFORMANCE RANGE

- Flow rate up to **850 l/min** (51 m³/h)
- Head up to **20.5 m**

INSTALLATION AND USE

Designed to transfer liquids that will not damage the pump's components, NGAS pumps feature an open impeller design.

This allows them to efficiently handle impurity-laden fluids without clogging, making them ideal for various applications including transfers from channels, rivers, tanks, basins, and more.

NGAs pumps are particularly suitable for pumping non-entirely clean liquids, facilitating the movement of solid particles up to **20 mm** in size.

APPLICATION LIMITS

- Manometric suction head up to **7 m**
- Liquid temperature between **-10 °C** up and **+90 °C**
- Ambient temperature between **-10 °C** and **+40 °C**
- Maximum working pressure:
 - **6 bar** for NGA1 and NGA2
 - **10 bar** for NGA3
- Passing solid in suspension up to:
 - **Ø 12 mm** for NGA1 and NGA2
 - **Ø 20 mm** for NGA3

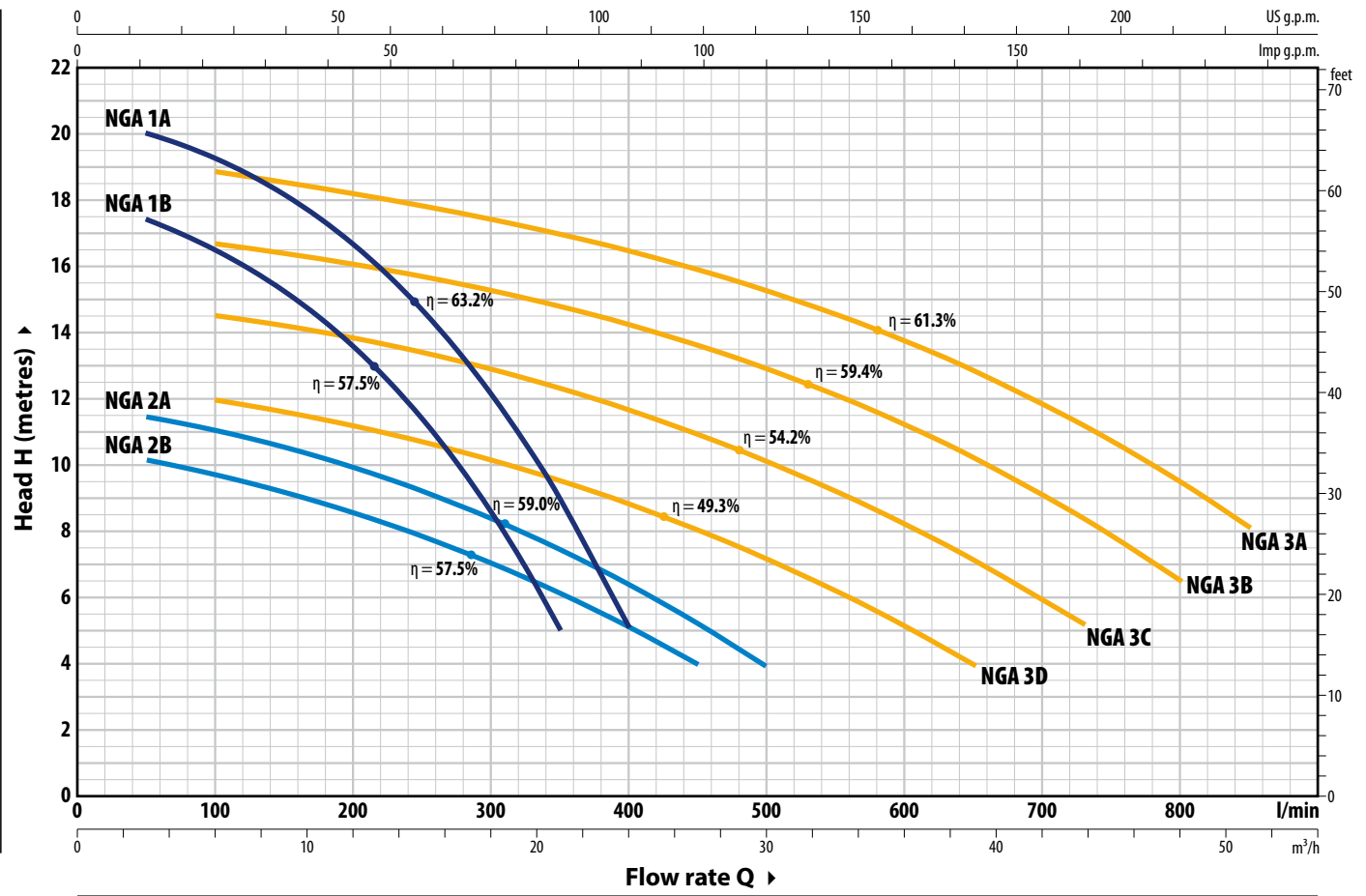
AVAILABLE UPON REQUEST

- ✘ Mechanical seal options available
- ✘ Pump body with NPT threaded ports ANSI B 1.20.1
- ✘ On request up to **110 °C**
- ✘ **IP X5** protection for **NGA 3**
- ✘ Different voltage or frequency
- ✘ Supply of ISO 228/1 flanges for suction and delivery ports in AISI 304 stainless steel



CURVES AND PERFORMANCE DATA – HS=0 m

60 Hz



TYPE		POWER (P ₂)		3~	Q	Flow rate												
Single-phase	Three-phase	kW	HP			m ³ /h	0	3	6	9	12	15	18	21	24			
NGAm 1B	NGA 1B	0.55	0.75	IE3	H m	0	50	100	150	200	250	300	350	400				
NGAm 1A	NGA 1A	0.75	1			18	17.4	16.4	15.2	13.5	11.3	8.7	5					
						20.5	20	19.3	18.1	16.6	14.7	12.1	9	5				

TYPE		POWER (P ₂)		3~	Q	Flow rate														
Single-phase	Three-phase	kW	HP			m ³ /h	0	3	6	12	18	24	27	30	39	43,8	48	51		
NGAm 2B	NGA 2B	0.55	0.75	IE3	H m	0	50	100	200	300	400	450	500	650	730	800	850			
NGAm 2A	NGA 2A	0.75	1			10.5	10.1	9.6	8.5	7	5.1	4								
NGAm 3D	NGA 3D	1.1	1.5			11.8	11.4	11	9.9	8.4	6.4	5.2	4							
NGAm 3C	NGA 3C	1.5	2			12.5	-	12	11.2	10.1	8.8	8	7.1	4						
NGAm 3B	NGA 3B	1.8	2.5			15	-	14.5	13.8	12.8	11.6	10.9	10.1	7.1	5.2					
NGAm 3A	NGA 3A	2.2	3			17.2	-	16.7	16	15.2	14.2	13.6	12.9	10.2	8.4	6.5				
						19.5	-	18.8	18.1	17.4	16.4	15.8	15.2	12.8	11.1	9.4	8			

Q = Flow rate H = Total manometric head HS = Suction height

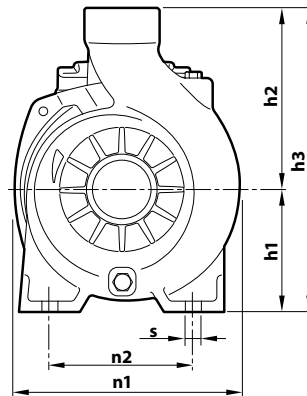
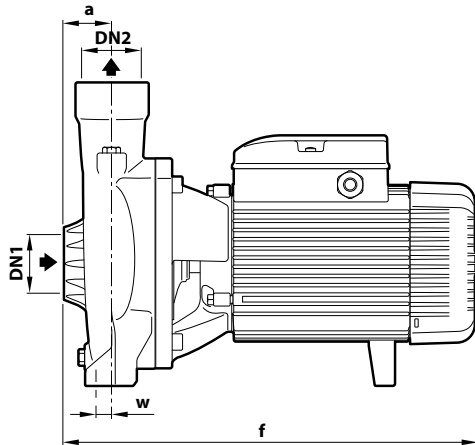
Performance curves comply with EN ISO 9906 Grade 3B tolerance limits.

ABSORPTION

TYPE	VOLTAGE	
	220 V	110 V
Single-phase		
NGAm 1B	5.3 A	10.6 A
NGAm 1A	6.2 A	12.4 A
NGAm 2B	4.3 A	8.6 A
NGAm 2A	4.7 A	9.4 A
NGAm 3D	7.0 A	-
NGAm 3C	9.5 A	-
NGAm 3B	11.0 A	-
NGAm 3A	13.0 A	-

TYPE	VOLTAGE	
	220 V - Δ	380 V - Δ
Three-phase		
NGA 1B	3.4 A	2.0 A
NGA 1A	3.9 A	2.3 A
NGA 2B	2.7 A	1.6 A
NGA 2A	3.0 A	1.7 A
NGA 3D	4.8 A	2.8 A
NGA 3C	6.0 A	3.5 A
NGA 3B	7.2 A	4.2 A
NGA 3A	8.4 A	4.9 A

DIMENSIONS AND WEIGHT

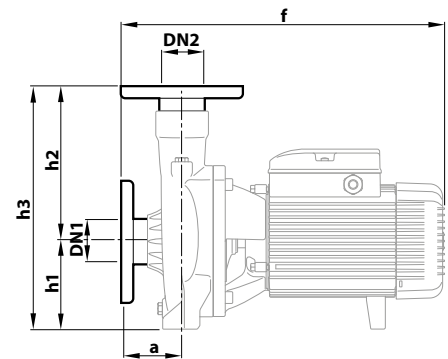


WITH THREADED PORTS

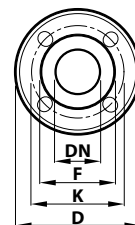
TYPE		PORTS		DIMENSIONS mm									kg	
Single-phase	Three-phase	DN1	DN2	a	f	h1	h2	h3	n1	n2	w	s	1~	3~
NGAm 1B	NGA 1B	1½"	1½"	40	299	92	135	227	190	160	6	11	12.6	12.6
NGAm 1A	NGA 1A												12.7	12.6
NGAm 2B	NGA 2B			12.7									12.6	
NGAm 2A	NGA 2A			12.7									12.6	
NGAm 3D	NGA 3D	2"	2"	48	387	120	178	298	217	140	18	11.5	22.0	21.2
NGAm 3C	NGA 3C												22.9	22.9
NGAm 3B	NGA 3B			25.4									25.5	
NGAm 3A	NGA 3A			25.5									25.5	

WITH FLANGED PORTS

TYPE		PORTS		DIMENSIONS mm					
Single-phase	Three-phase	DN1	DN2	a	f	h1	h2	h3	
NGAm 1B	NGA 1B	40	40	60	334	92	156	248	
NGAm 1A	NGA 1A								
NGAm 2B	NGA 2B			52					342
NGAm 2A	NGA 2A								
NGAm 3D	NGA 3D	50	50	70	408	120	200	320	
NGAm 3C	NGA 3C								
NGAm 3B	NGA 3B			428					
NGAm 3A	NGA 3A								



FLANGE	D	K	F	HOLES	
DN	mm	mm	mm	N°	Ø (mm)
40	150	110	78	4	18
50	165	125	99	4	18



MATERIALS AND COMPONENTS

1 Pump body	Cast iron JL 250 with cataphoresis treatment with ISO 228/1 threaded ports			
2 Cover	Cast iron JL 200 for NGA3 AISI 304 stainless steel for NGA1 and NGA2			
3 Impeller	Open impeller cast iron			
4 Mechanical seal	Water pump	Seal	Shaft	Materials
	NGA1	AR-14	Ø 14 mm	Ceramic / Graphite / NBR
	NGA2			
	NGA3	FN-18	Ø 18 mm	Graphite / Ceramic / NBR
5 Motor shaft	Stainless steel AISI 431			
6 Electric motor	<p>NGAm: single-phase 220 V - 60 Hz with winding integrated thermal motor protection</p> <p>NGA: three-phase 220/380 V - 60 Hz</p> <ul style="list-style-type: none"> – The three-phase pumps are fitted with high performance motors in class IE3 (IEC 60034-30-1) – Continuous running duty S1 			

